

WAAS CH <b>42833</b> <b>W20A</b>	APP CRS <b>201°</b>	Rwy Idg TDZE Apt Elev	<b>6307</b> <b>4970</b> <b>4970</b>
--	------------------------	-----------------------------	---

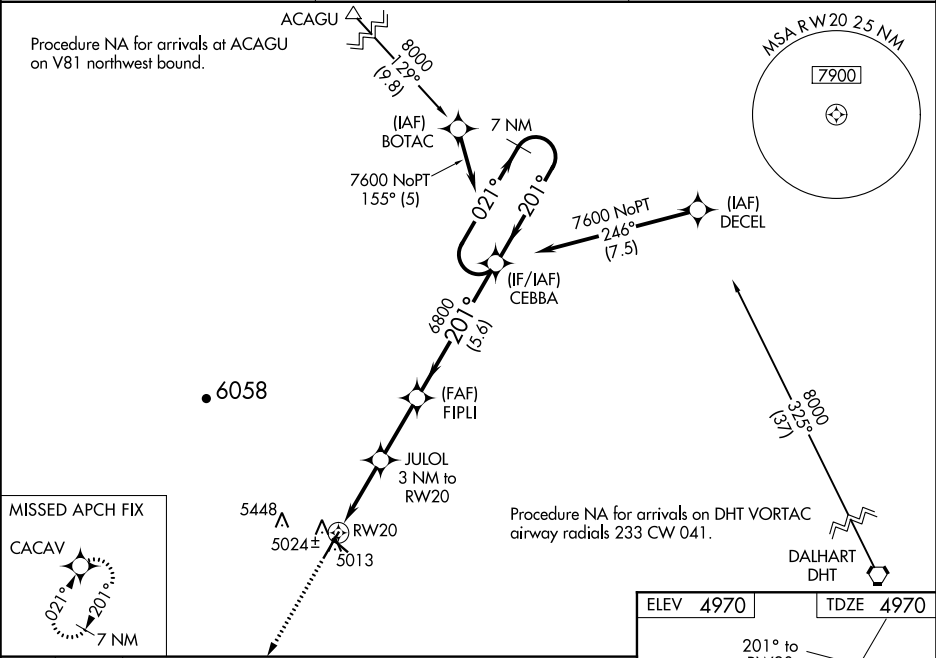
RNAV (GPS) RWY 20

CLAYTON MUNI AIRPARK (CAO)

**⚠** For uncompensated Baro-VNAV systems, LNAV/VNAV NA below -16°C (4°F) or above 54°C (130°F). Circling NA west of Rwy 2-20. DME/DME RNP-0.3 NA. When local altimeter setting not received, use Dalhart altimeter setting and increase all DA 227 feet and all MDA 240 feet, increase LPV all Cats visibility 7⁄8 mile, increase LNAV/VNAV all Cats visibility 3⁄4 mile, increase LNAV Cat C visibility 5⁄8 mile, and increase circling Cat C visibility 1⁄4 mile. Baro-VNAV and VDP NA when using Dalhart altimeter setting.

**MISSED APPROACH:** Climb to 8000 direct CACAV and hold, continue climb-in-hold to 8000.

ASOS <b>120.625</b>	ALBUQUERQUE CENTER <b>127.85 285.475</b>	UNICOM <b>122.8 (CTAF) 0</b>
------------------------	---	---------------------------------



8000 CACAV		CEBBA		7 NM Holding Pattern	
*LNAV only.		FIPLI		021° 7600	
*1.1 NM to RW20		JULOL 3 NM to RW20		GP 3.00° TCH 49	
RW20		5960*		6800	
-1.1		1.9 NM		2.6 NM	
CATEGORY		A		B	
LPV DA		5220-3⁄4		250 (300-3⁄4)	
LNAV/VNAV DA		5300-1 1⁄8		330 (400-1 1⁄8)	
LNAV MDA		5360-1		390 (400-1)	
CIRCLING		5360-1		5420-1	
		390 (400-1)		450 (500-1)	

