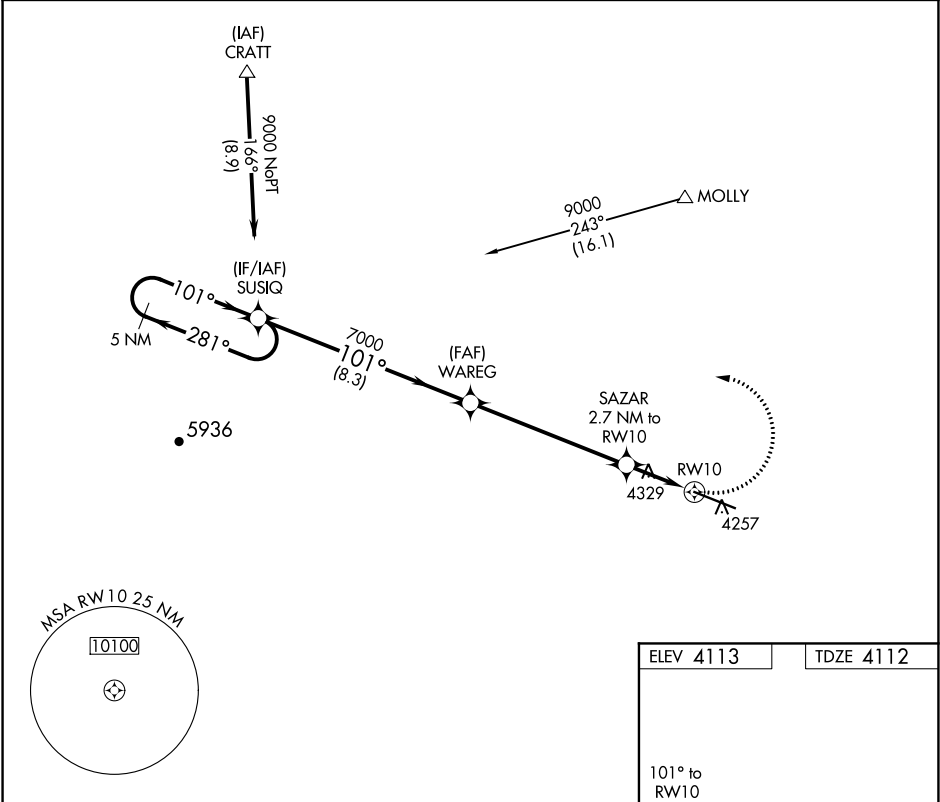


APP CRS	Rwy Idg	9550
101°	TDZE	4112
	Apt Elev	4113

RNAV (GPS) RWY 10
DONA ANA COUNTY INTL JETPORT (DNA)

<p>NA</p> <p>DME/DME RNP-0.3 NA. When local altimeter setting not received, use El Paso Intl altimeter setting.</p>	<p>MISSED APPROACH: Climbing left turn to 9000 direct SUSIQ and hold.</p>
--	---

AWOS-3PT 124.175	EL PASO APP CON 119.15	AUNICOM 122.725 (CTAF) 0
---------------------	---------------------------	------------------------------------



5 NM Holding Pattern

SUSIQ

WAREG

SAZAR 2.7 NM to RW10

RW10

9000

281°

101°

101°

7000

3.07° TCH 43

5000

8.3 NM

6.1 NM

2.7 NM

9000

SUSIQ

WAREG

SAZAR 2.7 NM to RW10

RW10

9000

SUSIQ

WAREG

SAZAR 2.7 NM to RW10

RW10

9550 X 100

10

28

10

28

CATEGORY	A	B	C	D
LNAV MDA	4700-1	588 (600-1)	4700-1¾	588 (600-1¾)
CIRCLING	4760-1	647 (700-1)	4760-1¾ 647 (700-1¾)	4760-2 647 (700-2)

MIRL Rwy 10-28

REIL Rwy 10 and 28