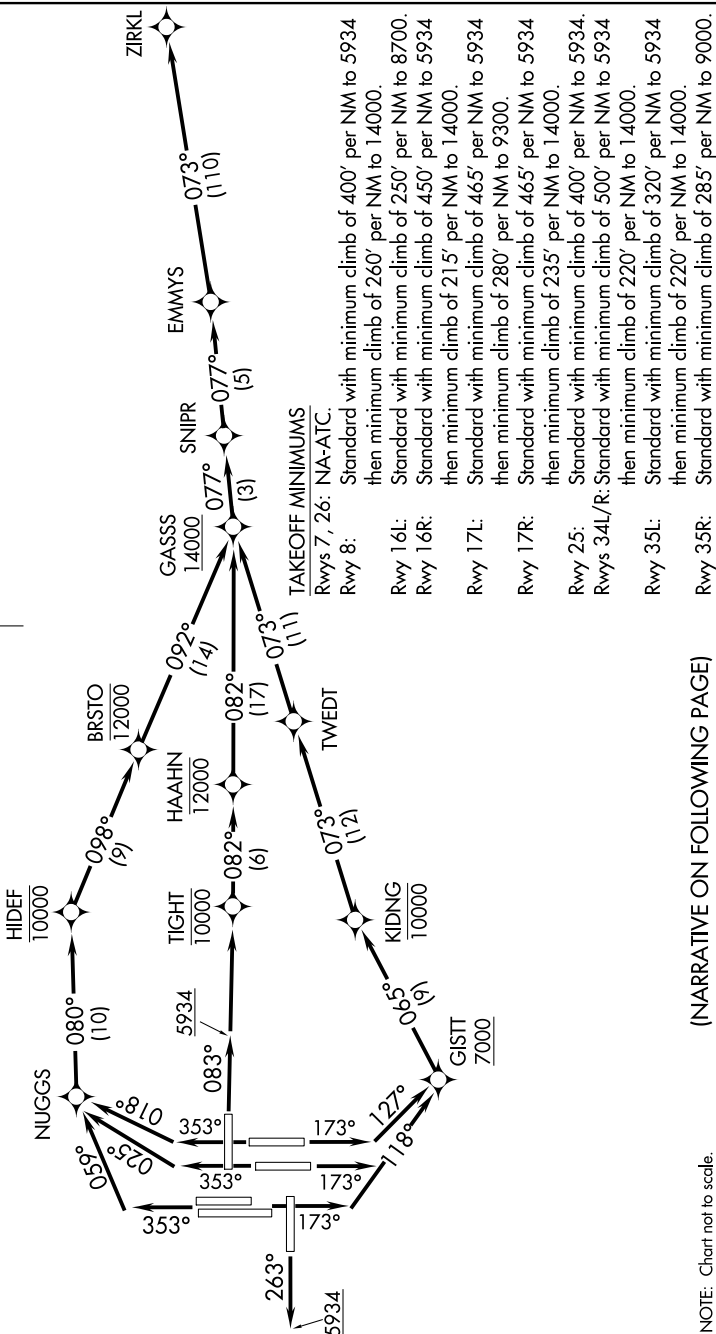


D-ATIS DEP	134.025
CLINC DEL	118.75
CPDLC	
DENVER DEP CON	128.25 371.95

TOP ALTITUDE:
FL230

NOTE: DME/DME/IRU or GPS required.
 RNAV 1.
 Turboprops only.
 Takeoff Rwy 16L/R, 17L/R, 34L/R for non-GPS equipped aircraft.
 Accelerate to at or above 250K alt required to meet crossing restrictions.
 Rwy 25 Departures - RADAR required.



NOTE: Chart not to scale.

(NARRATIVE ON FOLLOWING PAGE)

SW-1, 03 DEC 2020 to 31 DEC 2020

EMMYS SEVEN DEPARTURE (RNAV)

(EMMYS7.ZIRKL) 30JAN20

DENVER, COLORADO

DENVER INTL (DEN)