

D-ATIS DEP	134.025
CLINC DEL	118.75
CPDLC	
DENVER DEP CON	128.25 371.95

**TOP ALTITUDE:**  
**FL230**

NOTE: DME/DME/IRU or GPS required.

NOTE: RNAV 1.

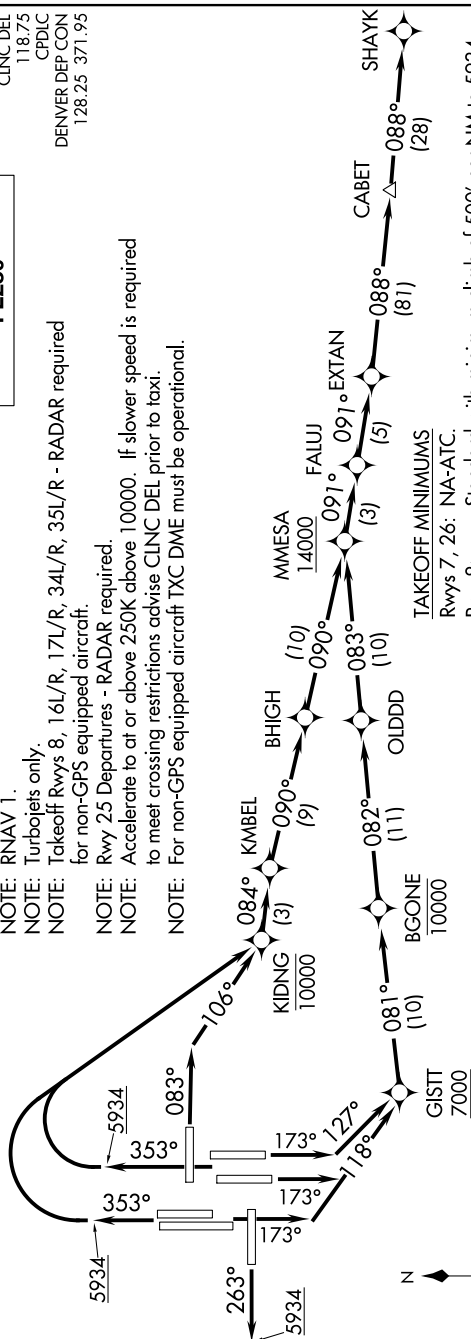
NOTE: Turbojets only.

NOTE: Takeoff Rwy's 8, 16L/R, 17L/R, 34L/R, 35L/R - RADAR required for non-GPS equipped aircraft.

NOTE: Rwy 25 Departures - RADAR required.

**NOTE:** Accelerate to at or above 250K above 10000. If slower speed is required to meet crossing restrictions advise CLINC DEL prior to taxi.

**NOTE:** For non-GPS equipped aircraft TXC DME must be operational.



## TAKEOFF MINIMUMS

Rwys 7, 26: NA-ATC.

Standard with minimum climb of 500' per NM to 5934  
then minimum climb of 260' per NM to 14000.

Standard with minimum climb of 245' per NM to 14000.

Standard with minimum climb of 450' per NM to 5934

then minimum climb of 225' per NM to 14000

Standard with minimum climb of 46.5' per NM to 5934

then minimum climb of 280' per NM to 14000

Standard with minimum climb of 165' per NM to 5934

then minimum climb of 250' per NM to 14000

Standard with minimum climb of 400' per NM to 5034

Standard with minimum climb of 400 feet per NM to 5034 feet and with a climb of 500 feet per NM to 5034 feet.

Standard with minimum climb of 300 per NM to 3934  
 feet minimum climb of 300 per NM to 14000

then minimum climb of 220 per NM to 14000.

Standard with minimum climb of 500' per NM to 5934

then minimum climb of 230' per NM to 14000.

Standard with minimum climb of 500' per NM to 5934

then minimum climb of 240' per NM to 14000.

(NARRATIVE ON FOLLOWING PAGE)

NOTE: Chart not to scale.

SW-1, 03 DEC 2020 to 31 DEC 2020

## EXTAN SIX DEPARTURE (RNAV)

(EXTAN6.SHAYK) 30JAN20

DENVER, COLORADO

DENVER INTL (DEN)