

D-ATIS DEP  
134.025  
CLNC DEL  
118.75  
CPDLC  
DENVER DEP CON  
127.05 363.25

## TAKEOFF MINIMUMS

Rwys 7, 26: NA-ATC.

Rwys 8, 35L/R: Standard with minimum climb of 400' per NM to 5934.

Rwys 16L/R, 17L/R: Standard.

Rwys 25, 34L: Standard with minimum climb of 425' per NM to 5934.

Rwy 34R: Standard with minimum climb of 430' per NM to 5934.

NOTE: DME/DME/IRU or GPS required.

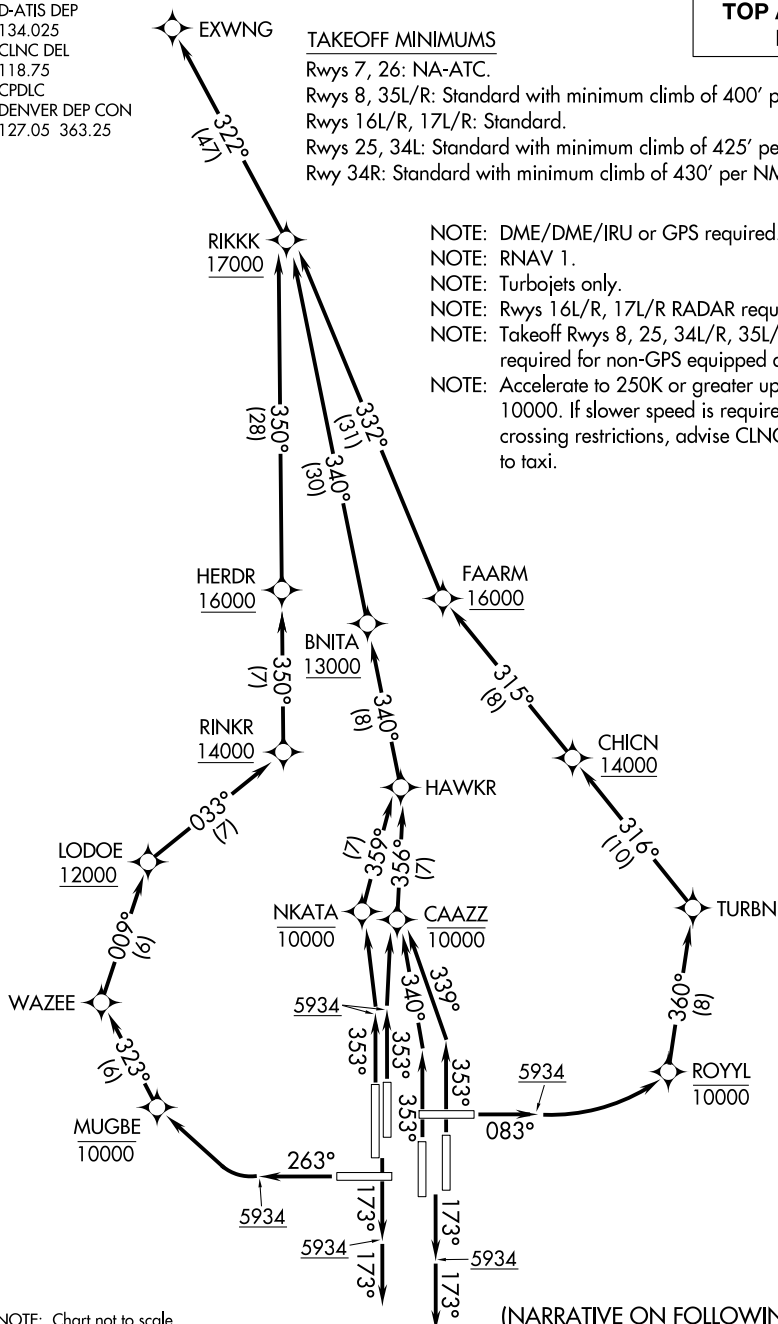
NOTE: RNAV 1.

NOTE: Turbojets only.

NOTE: Rwy 16L/R, 17L/R RADAR required.

NOTE: Takeoff Rwy 8, 25, 34L/R, 35L/35R - RADAR required for non-GPS equipped aircraft.

NOTE: Accelerate to 250K or greater upon reaching 10000. If slower speed is required to meet crossing restrictions, advise CLNC DEL prior to taxi.



NOTE: Chart not to scale.

(NARRATIVE ON FOLLOWING PAGE)

## EXWING ONE DEPARTURE (RNAV)

(EXWNG1.EXWNG) 26MAR20

DENVER, COLORADO  
DENVER INTL (DEN)

SW-1, 03 DEC 2020 to 31 DEC 2020