

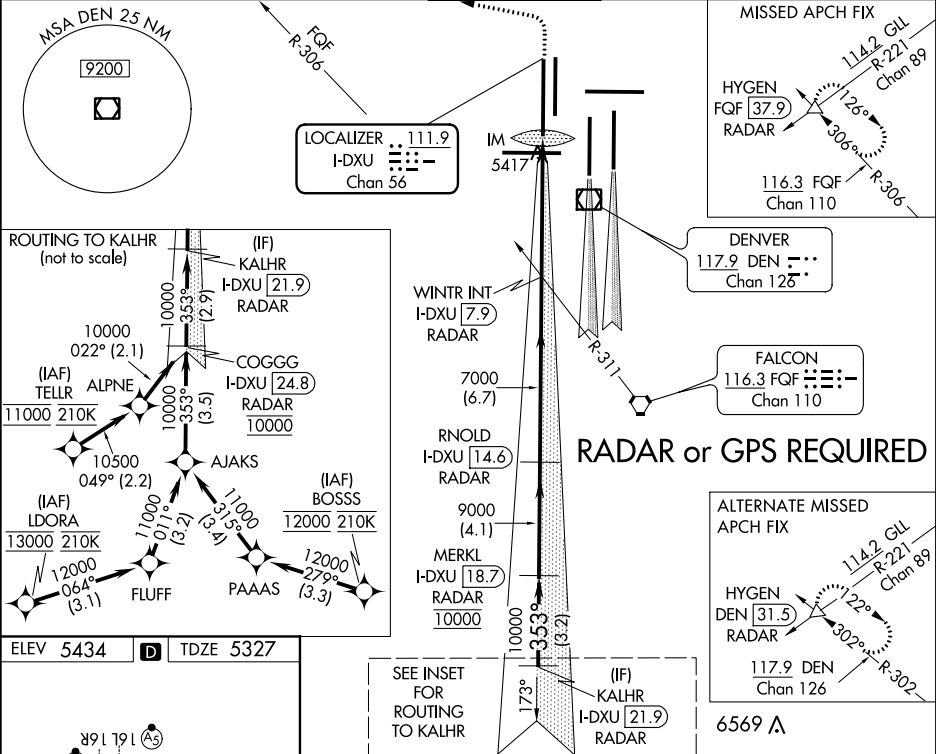
LOC/DME I-DXU 111.9 Chan 56	APP CRS 353°	Rwy Idg 16000 TDZE 5327 Apt Elev 5434	ILS RWY 34L (CAT II & III) DENVER INTL (DEN)
---	------------------------	--	--

⚠️ **RADAR or DME required.** Simultaneous approach authorized with Rwy 35L/R. CAT II: RVR 1000 authorized with specific OPSPEC, MSPEC, or LOA approval and use of autoland or HUD to touchdown.

ALSF-2

MISSED APPROACH: Climb to 5800 then climbing left turn to 10000 on heading 270° and on FQF VORTAC R-306 to HYGEN/FQF 37.9 DME/RADAR and hold.

D-ATIS ARR 125.6 379.9 DEP 134.025	DENVER APP CON 119.3 307.3 120.35 379.3 (NORTH) (SOUTH)	DENVER TOWER 135.3 351.95	GND CON 127.5 379.175	CLNC DEL 118.75	CPDLC
--	--	-------------------------------------	---------------------------------	---------------------------	-------



HURL all Rwy's

TDZ/CL Rwy's 7, 16L, 16R, 17R, 26, 34L,
34R, 35L, 35R

VGSi and ILS glidepath not coincident
(VGSi Angle 3.00/TCH 70).

KALHR I-DXU 21.9 RADAR
MERKL I-DXU 18.7 RADAR
RNOLD I-DXU 14.6 RADAR
WINTR INT I-DXU 7.9 RADAR

10000 — 353° — 10000

GS 3.00° TCH 50

3.2 NM 4.1 NM 6.7 NM 5.1 NM 1090'

CATEGORY	A	B	C	D
S-ILS 34L	CAT II RA 108/12 100 DA 5427			
S-ILS 34L	CAT IIIa RVR 07			
S-ILS 34L	CAT IIIb RVR 03			
S-ILS 34L	CAT IIIc NA			

**CATEGORY II & III ILS - SPECIAL AIRCREW
& AIRCRAFT CERTIFICATION REQUIRED**