

ILS RWY 35L (SA CAT I)
DENVER INTL (DEN)

DENVER INTL (DEN)

MISSED APPROACH: Climb to 10000 then right turn direct GLL VOR/DME and hold.

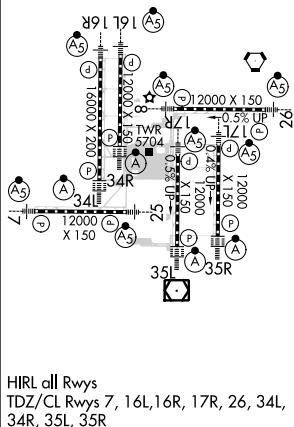


CPDLC

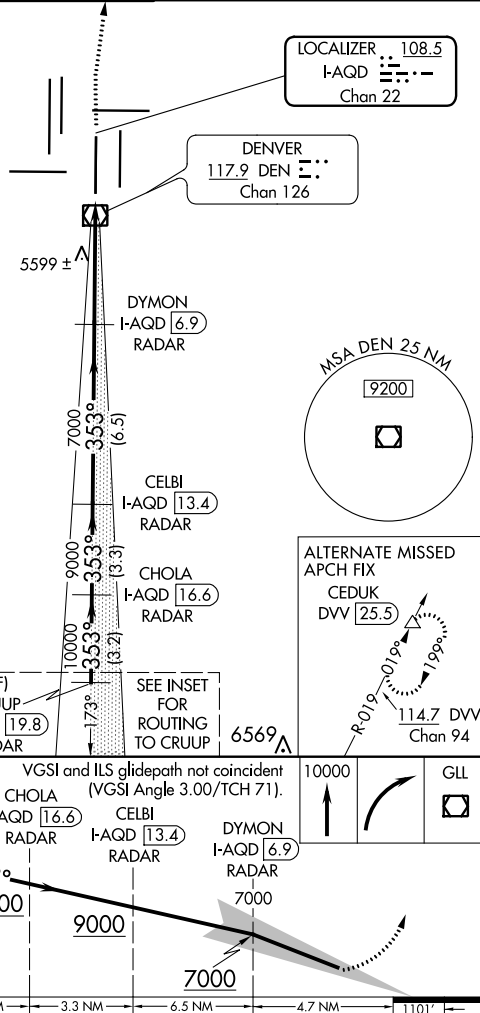
025°
205°-R-025-
GILL
GILL
114.2
Chan 89

[illegible]

TDZE 5434



HIRL all Rwy's
TDZ/CL Rwy's 7, 16L, 16R, 17R, 26, 34L,
34R, 35L, 35R



RA 165/14 150 DA 5584

SA CATEGORY I ILS - SPECIAL AIRCREW
& AIRCRAFT CERTIFICATION REQUIRED