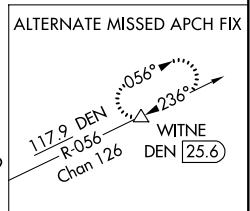
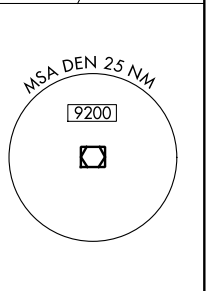
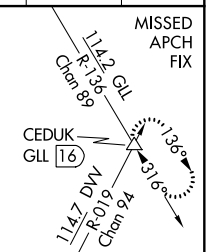
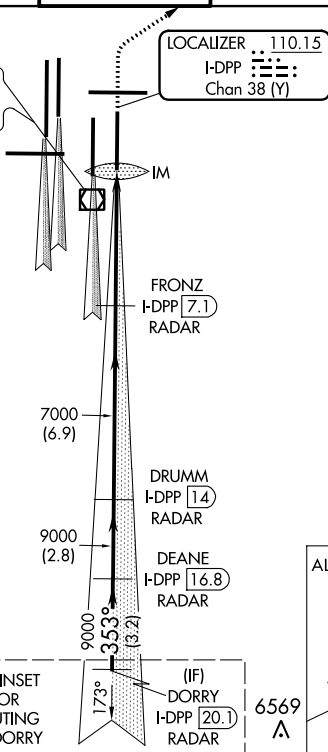


**ILS RWY 35R (SA CAT I)**  
DENVER INTL (DEN)

DENVER INTL (DEN)

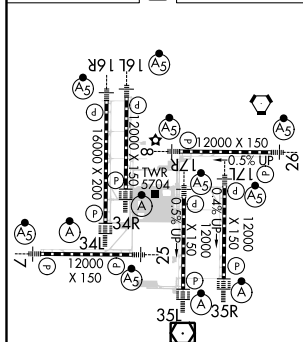
ALSF-2

**MISSED APPROACH:** Climb to 5800 then climbing right turn to 10000 on heading 048° and on GLL VORTAC R-136 to CEDUK/GLL 16 DME and hold.

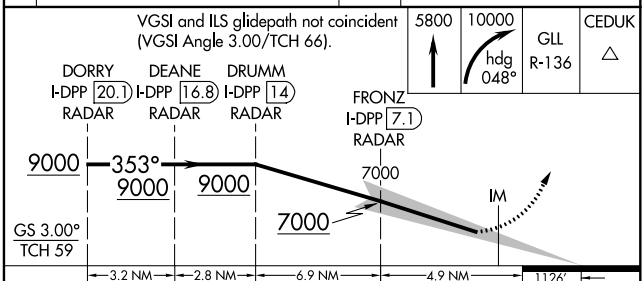


SEE INSET  
FOR  
ROUTING  
TO DORRY

(IF)  
DORRY  
I-DPP 20.1  
RADAR



HIRL all Rwy's  
TDZ/CL Rwy's 7, 16L, 16R, 17R, 26, 34L,  
34R, 35L, 35R



CATEGORY	A	B	C	D
S-ILS 35R	RA 161/14 150 DA 5520			

SA CATEGORY I ILS - SPECIAL AIRCREW  
& AIRCRAFT CERTIFICATION REQUIRED