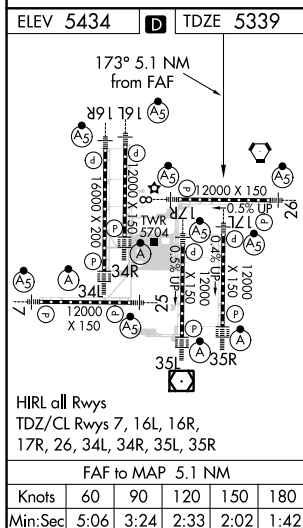
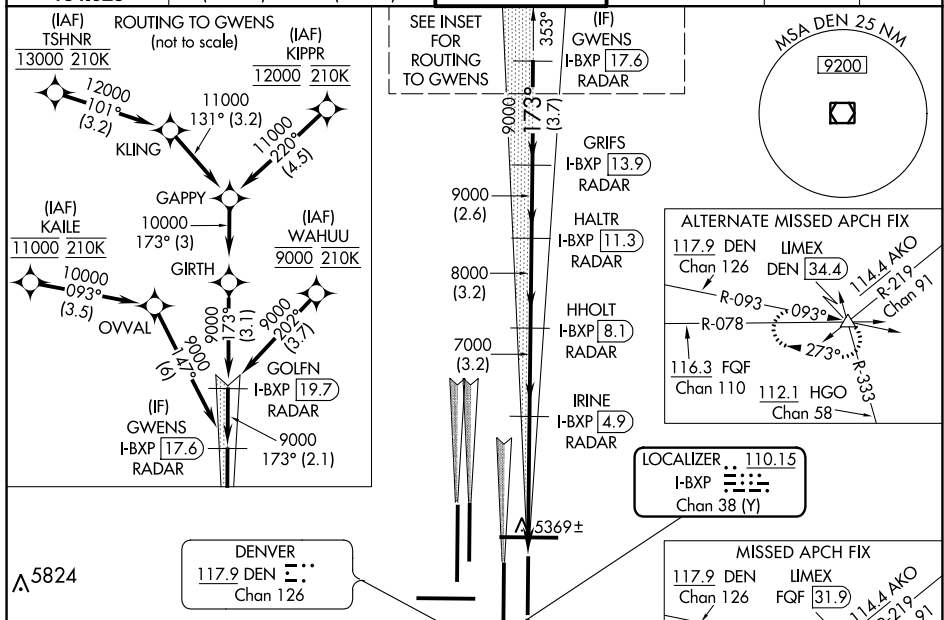
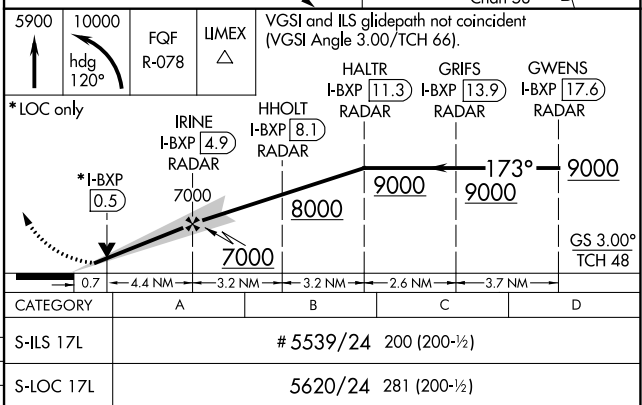


ILS or LOC RWY 17L
DENVER INTL (DEN)

MALSR

MISSED APPROACH: Climb to 5900 then climbing left turn to 10000 on heading 120° and FQF VORTAC R-078 to LIMEX INT/FQF 31.9 DME and hold.

	D-ATIS	DENVER APP CON		DENVER TOWER		GND CON		CLNC DEL	CPDLC
ARR	125.6 379.9	119.3 307.3	120.35 379.3	132.35	239.275	121.85	377.1	118.75	
DEP	134.025	(NORTH)	(SOUTH)						

RADAR or GPS
REQUIRED

SW-1, 03 DEC 2020 to 31 DEC 2020