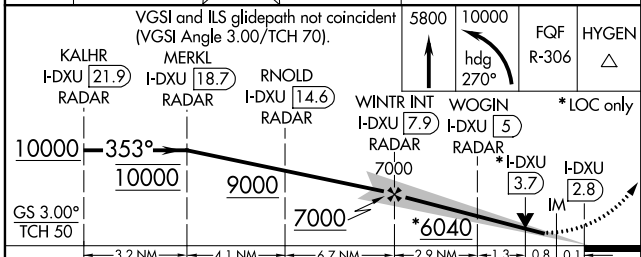
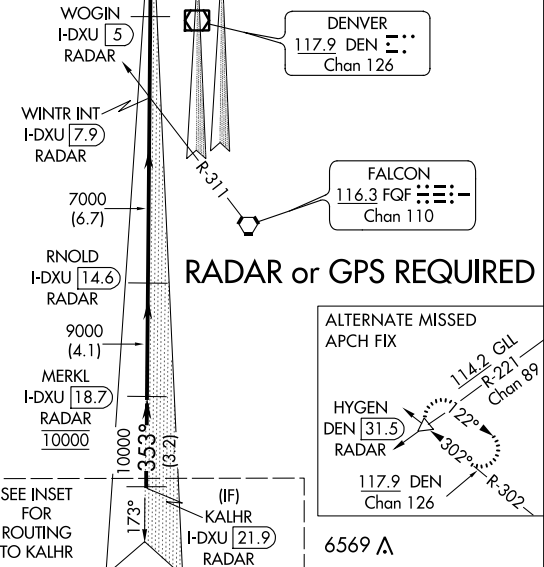
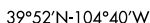
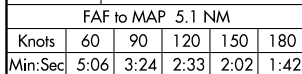


ILS or LOC RWY 34L
DENVER INTL (DEN)

MISSED APPROACH: Climb to 5800 then climbing left turn to 10000 on heading 270° and on FQF VORTAC R-306 to HYGEN/FQF 37.9 DME/RADAR and hold.



CATEGORY	A	B	C	D
S-ILS 34L	5527/18 200 (100-½)			
S-LOC 34L	5680/24 353 (300-½)		5680/30 353 (300-¾)	