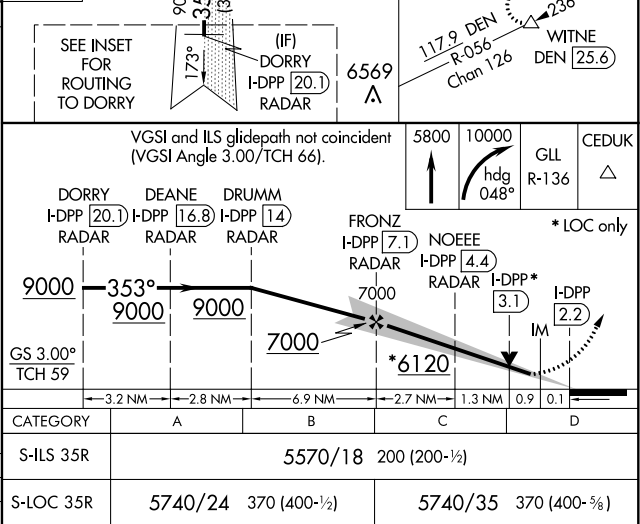
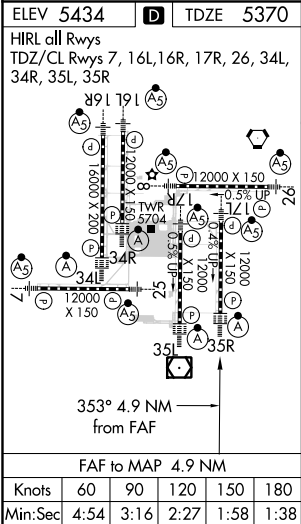
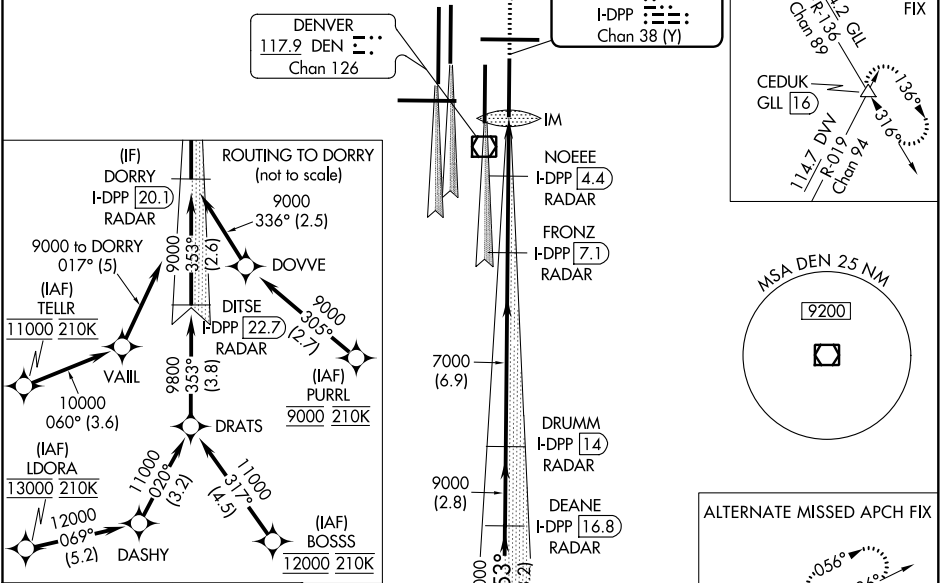


LOC/DME I-DPP <b>110.15</b> Chan <b>38(Y)</b>	APP CRS <b>353°</b>	Rwy Idg <b>12000</b> TDZE <b>5370</b> Apt Elev <b>5434</b>
---	------------------------	--

ILS or LOC RWY 35R  
DENVER INTL (DEN)

S-LOC 35R DME or RADAR required. Simultaneous approach authorized with Rwy 34L, Rwy 34R, and Rwy 35L.		ALSF-2 	MISSED APPROACH: Climb to 5800 then climbing right turn to 10000 on heading 048° and on GLL VORTAC R-136 to CEDUK/GLL 16 DME and hold.		
D-ATIS ARR <b>125.6 379.9</b> DEP <b>134.025</b>	DENVER APP CON <b>119.3 307.3 120.35 379.3</b> (NORTH) (SOUTH)	DENVER TOWER <b>132.35 239.275</b>	GND CON <b>121.85 377.1</b>	CLNC DEL <b>118.75</b>	CPDLC

RADAR or GPS REQUIRED



SW-1, 03 DEC 2020 to 31 DEC 2020

SW-1, 03 DEC 2020 to 31 DEC 2020