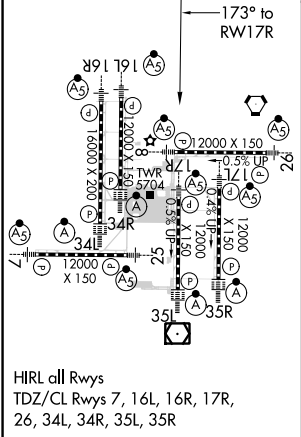
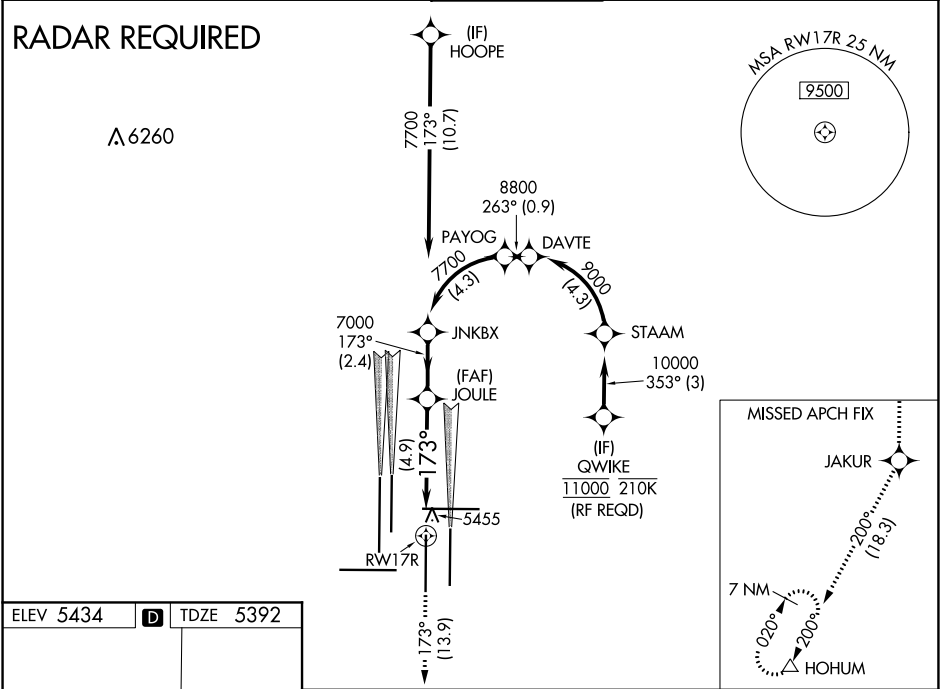


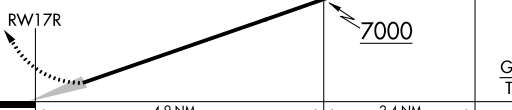
APP CRS	Rwy Idg	12000
173°	TDZE	5392
	Apt Elev	5434

RNAV (RNP) Z RWY 17R

DENVER INTL (DEN)

<div><div>GPS required. For inoperative MALS, increase RNP 0.10 all Cats visibility to RVR 5000 and RNP 0.30 all Cats visibility to 1% mile. Simultaneous approach authorized. Use of FD or AP providing RNAV track guidance required during simultaneous operations. For uncompensated Baro-VNAV systems, procedure NA below -25°C (-13°F) or above 45°C (114°F).</div></div>			<div>MALS</div> <div></div>	<div>MISSED APPROACH: Climb to 10000 on track 173° to JAKUR and on track 200° to HOHUM and hold.</div>		
D-ATIS	DENVER APP CON		DENVER TOWER	GND CON	CLNC DEL	CPDLC
ARR 125.6 379.9	119.3 307.3 120.35 379.3		133.3 322.45	121.85 377.1	118.75	
DEP 134.025	(NORTH) (SOUTH)					



10000 ↑ tr 173°	JAKUR ✦	tr 200°	HOHUM △	VGSI and RNAV glidepath not coincident (VGSI Angle 3.00/TCH 69°).	
See planview for multiple IF locations.				JNKBX	
				7000 7000 7700	
				GP 3.00° TCH 60	
CATEGORY	A		B	C	D
RNP 0.10 DA	5722/32 330 (300-5%)				
RNP 0.30 DA	5894/60 502 (500-1¼)				
AUTHORIZATION REQUIRED					