

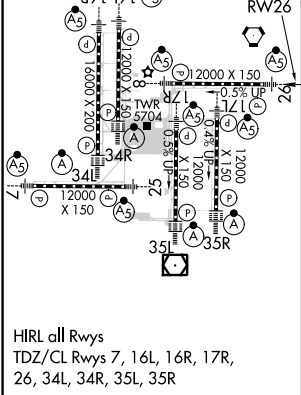
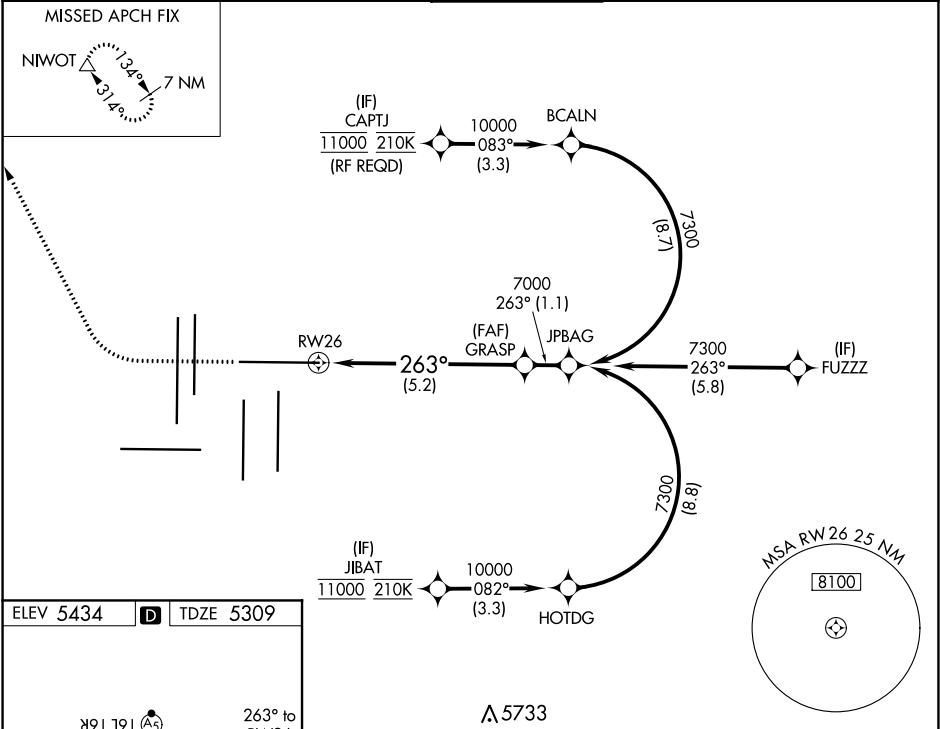
APP CRS	Rwy Idg	12000
263°	TDZE	5309
	Apt Elev	5434

RNAV (RNP) Z RWY 26

DENVER INTL (DEN)

RNP AR APCH.	MALSR	MISSED APPROACH: Climb to 6000 then climbing right turn to 10000 direct NIWOT and hold.
<p>Simultaneous approach authorized. For uncompensated Baro-VNAV systems, procedure NA below -23°C or above 54°C. For inop ALS, increase RNP 0.15 all Cats visibility to RVR 4000, and increase RNP 0.30 all Cats visibility to RVR 4500.</p>		

D-ATIS	DENVER APP CON	DENVER TOWER	GND CON	CLNC DEL	CPDLC
ARR 125.6 379.9 DEP 134.025	119.3 307.3 120.35 379.3 (NORTH) (SOUTH)	132.35 239.275	121.85 377.1	118.75	



A 5733				
6000	10000	NIWOT		
VGSi and RNAV glidepath not coincident (VGSi Angle 3.00/TCH 70).				
See planview for multiple IF locations.				
5.2 NM				
CATEGORY	A	B	C	D
RNP 0.15 DA	5566/24 257 (200-½)			
RNP 0.30 DA	5611/24 302 (200-½)			
AUTHORIZATION REQUIRED				