

APP CRS	Rwy Idg	12000
353°	TDZE	5434
	Apt Elev	5434

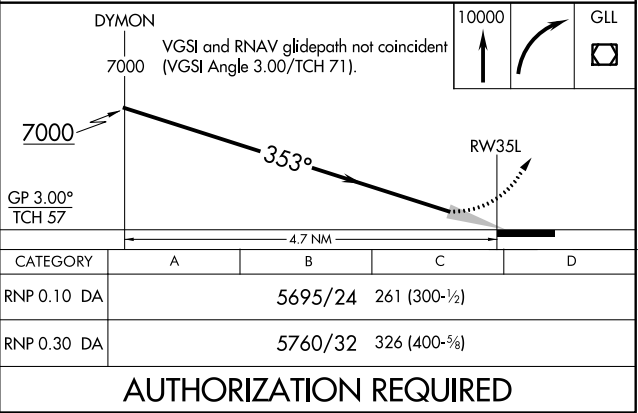
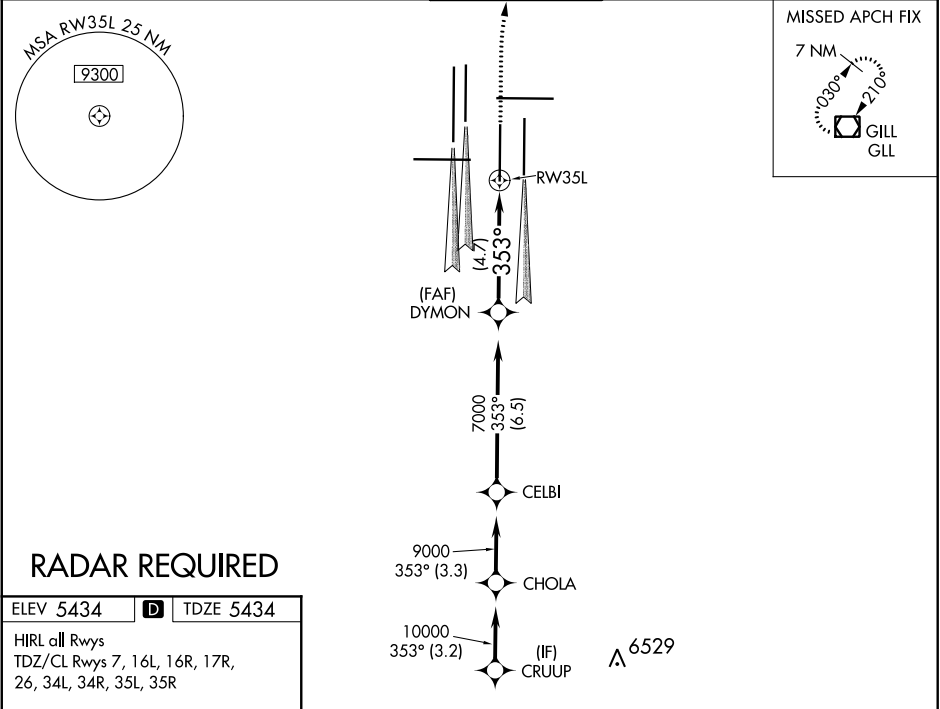
RNAV (RNP) Z RWY 35L  
DENVER INTL (DEN)

**⚠** For uncompensated Baro-VNAV systems, procedure NA below -25°C (-13°F) or above 46°C (115°F). GPS required. For inoperative ALSF, increase RNP 0.10 all Cnts visibility to RVR 4500 and RNP 0.30 all Cnts visibility to RVR 5000. Simultaneous approach authorized. Use of FD or AP providing RNAV track guidance required during simultaneous operations.

ALSF-2

MISSED APPROACH: Climb to 10000, then right turn direct GLL VOR/DME and hold.

D-ATIS	DENVER APP CON	DENVER TOWER	GND CON	CLNC DEL	CPDLC
ARR 125.6 379.9	119.3 307.3 120.35 379.3	133.3 322.45	121.85 377.1	118.75	
DEP 134.025	(NORTH) (SOUTH)				



SW-1, 03 DEC 2020 to 31 DEC 2020

SW-1, 03 DEC 2020 to 31 DEC 2020