

WAAS CH 99307 W16A	APP CRS 173°	Rwy Idg 12000 TDZE 5357 Apt Elev 5434
--	------------------------	--

RNAV (GPS) Y RWY 16L
DENVER INTL (DEN)

▼ For uncompensated Baro-VNAV systems, LNAV/VNAV NA below -25°C (-13°F) or above 45°C (114°F). Simultaneous approach authorized with Rwy 17 L/R. DME/DME RNP -0.3 NA. LNAV procedure NA during simultaneous operations. For inoperative RVRSLR, increase LNAV/VNAV all Cats, and LNAV Cats C/D visibility to RVR 4500. Use of FD or AP providing RNAV track guidance required during simultaneous operations.

MALSR



MISSED APPROACH: Climb to 5900 then climbing right turn to 10000 direct BINBE and hold, continue climb-in-hold to 10000.

D-ATIS		DENVER APP CON		DENVER TOWER		GND CON		CLNC DEL		CPDLC
ARR	125.6 379.9	119.3 307.3	120.35 379.3	135.3	351.95	127.5	379.175	118.75		
DEP	134.025	(NORTH)	(SOUTH)							

A6260




RADAR REQUIRED

MISSED APCH FIX



MSA RW16L 25 NM

10200

5900	10000	BINBE
		

VGSI and RNAV glidepath not coincident (VGSI Angle 3.00/TCH 71).

*LNAV only

LUWEE
1.3 NM to
RW16L

LEETS
7000

RW16L

* 0.8 NM to
RW16L

173°

173°

5820*

7000

8000

9000

10000

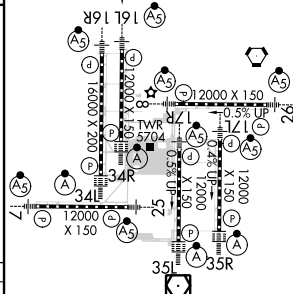
GP 3.00°

TCH 60

0.8 0.5 3.7 NM 3.2 NM 3.9 NM 3.9 NM

CATEGORY	A	B	C	D
LPV DA		5557/18	200 (200-½)	
LNAV/ VNAV DA		5647/24	290 (300-½)	
LNAV MDA		5660/24	303 (300-½)	

ELEV 5434	D	TDZE 5357
-----------	----------	-----------

173° to
RW16L

HIRL all Rwy's
TDZ/CL Rwy's 7, 16L, 16R, 17R,
26, 34L, 34R, 35L, 35R