


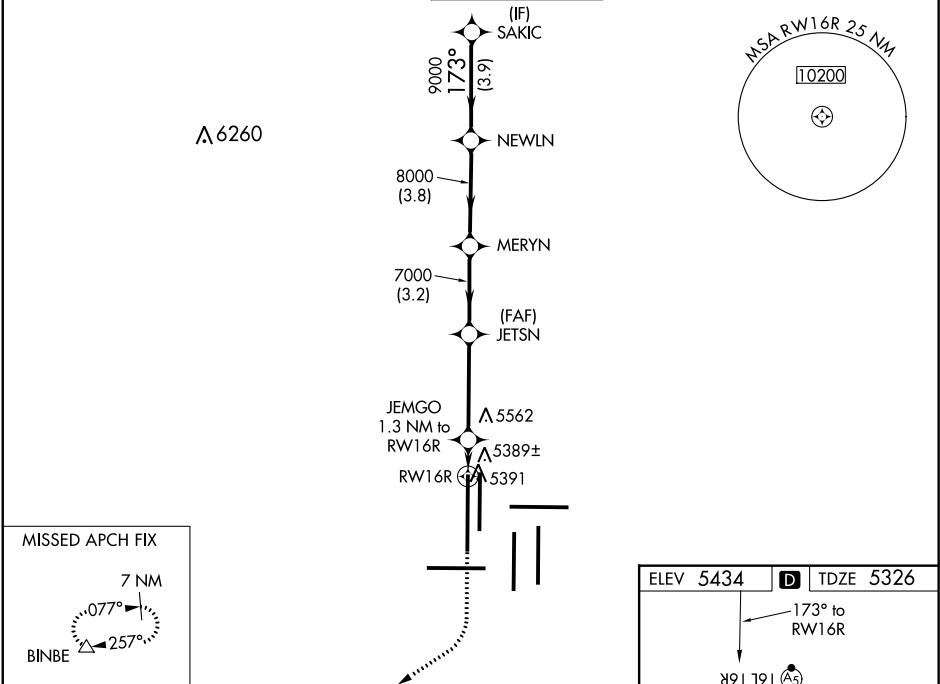
WAAS CH 82628 W16B	APP CRS 173°	Rwy Idg 16000 TDZE 5326 Apt Elev 5434
--	------------------------	--



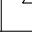
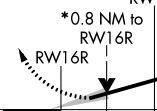
RNAV (GPS) Y RWY 16R

DENVER INTL (DEN)

RNP APCH.	MALSR 	MISSED APPROACH: Climb to 5900 then climbing right turn to 10000 direct BINBE and hold, continue climb-in-hold to 10000.
RADAR required. ▼ For uncompensated Baro-VNAV systems, LNAV/VNAV NA below -25°C or above 46°C. Simultaneous approach authorized with Rwy 17L/R. LNAV procedure NA during simultaneous operations. For inoperative MALSR, increase LNAV/VNAV all Cats visibility to RVR 4500, LNAV Cat C/D visibility to RVR 4500. Use of FD or AP providing RNAV track guidance required during simultaneous operations.		

D-ATIS ARR 125.6 379.9 DEP 134.025	DENVER APP CON 119.3 307.3 120.35 379.3 (NORTH) (SOUTH)	DENVER TOWER 135.3 351.95	GND CON 127.5 379.175	CLNC DEL 118.75	CPDLC
--	--	-------------------------------------	---------------------------------	---------------------------	-------



5900	10000	BINBE	VGSI and RNAV glidepath not coincident (VGSI Angle 3.00/TCH 71).			
			JEMGO 1.3 NM to RWY 16R	JETSN	MERYN	NEWLN
* LNAV only			* 0.8 NM to RWY 16R	173°		
			5780*	7000	8000	9000
0.8			0.5	3.8 NM	3.2 NM	3.8 NM
CATEGORY			A	B	C	D
LPV DA			5526/18		200 (100-½)	
LNAV/VNAV DA			5589/24		263 (200-½)	
LNAV MDA			5660/24	334 (300-½)	5660/26	334 (300-½)

