

| | | |
|--|------------------------|--|
| WAAS CH 53419 W35A | APP CRS 353° | Rwy Idg 12000 TDZE 5434 Apt Elev 5434 |
|--|------------------------|--|

RNAV (GPS) Y RWY 35L

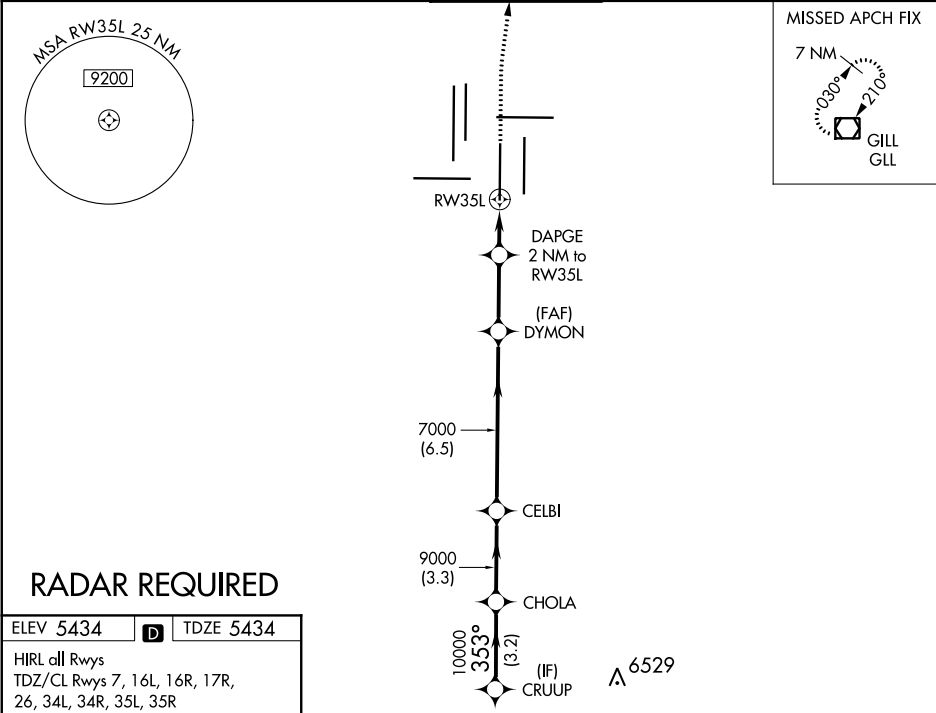
DENVER INTL (DEN)



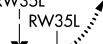

⚠ For uncompensated Baro-VNAV systems, LNAV/VNAV NA below -25°C (-13°F) or above 46°C (115°F). DME/DME RNP-0.3 NA. For inoperative ALSF, increase LNAV/VNAV visibility all Cats to RVR 4000. LNAV procedure NA during simultaneous operations. Simultaneous approach authorized with Rwy 34L, Rwy 34R, and Rwy 35R. Use of FD or AP providing RNAV track guidance required during simultaneous operations.

ALSF-2

MISSED APPROACH:
Climb to 10000 then right turn direct GLL VOR/DME and hold.

| | | | | | | | |
|--|-------------------------------|--------------------------------|--|---------------------|---------------------|---------------|-------|
| D-ATIS | DENVER APP CON | | | DENVER TOWER | GND CON | CLNC DEL | CPDLC |
| ARR 125.6 379.9 DEP 134.025 | 119.3 307.3 (NORTH) | 120.35 379.3 (SOUTH) | | 133.3 322.45 | 121.85 377.1 | 118.75 | |



| | | | | | | | |
|--------------------|---|--------|--------|---------------------------|---------------------|---|--|
| CRUUP | VGSI and RNAV glidepath not coincident (VGSI Angle 3.00/TCH 71). | | | | 10000 ↑ |  | GLL  |
| | CHOLA | CELBI | DYMON | DAPGE 2 NM to RW35L | *LNAV only | | |
| 11000 | 353° | 10000 | 353° | 7000 | | | |
| GP 3.00° TCH 57 | | 9000 | 7000 | *6120 | *0.9 NM to RW35L |  | |
| | 3.2 NM | 3.3 NM | 6.5 NM | 2.7 NM | 1.1 NM | 0.9 |  |
| CATEGORY | A | | B | C | D | | |
| LPV DA | 5634/18 200 (200-½) | | | | | | |
| LNAV/ VNAV DA | 5684/24 250 (300-½) | | | | | | |
| LNAV MDA | 5780/24 346 (400-½) | | | 5780/30 346 (400-½) | | | |