
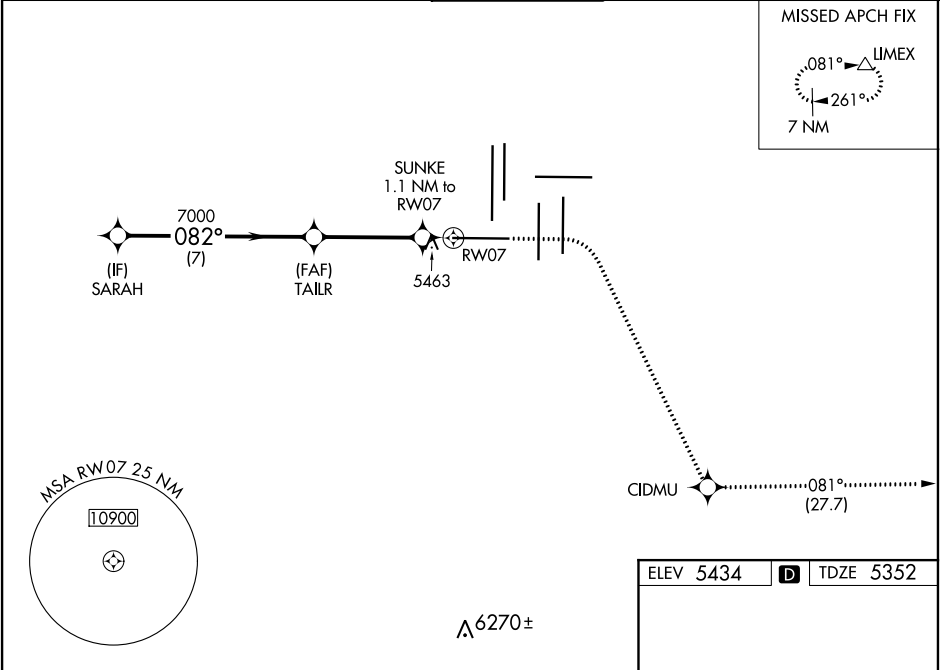


| | | |
|--|------------------------|--|
| WAAS CH 87128 W07A | APP CRS 082° | Rwy Idg 12000 TDZE 5352 Apt Elev 5434 |
|--|------------------------|--|

RNAV (GPS) Y RWY 7

DENVER INTL (DEN)

| | | | | | | |
|---|--------------------------|---------|---------------|--|----------|-------|
| RNP APCH. | | | MALSR | <div></div> <div>MISSED APPROACH: Climb to 5900 then climbing right turn to 10000 direct CIDMU and on track 081° to LIMEX and hold.</div> | | |
| RADAR required. | | | | | | |
| <div>▼ For uncompensated Baro-VNAV systems, LNAV/VNAV NA below -25°C or above 46°C. Simultaneous approach authorized with Rwy 8. LNAV procedure NA during simultaneous operations. Use of FD or AP providing RNAV track guidance required during simultaneous operations. For inop ALS, increase LNAV/VNAV all Cats visibility to RVR 4500 and LNAV Cat C/D visibility to RVR 5500.</div> | | | | | | |
| D-ATIS | DENVER APP CON | | DENVER TOWER | GND CON | CLNC DEL | CPDLC |
| ARR 125.6 379.9 | 119.3 307.3 120.35 379.3 | | 128.75 273.55 | 127.5 379.175 | 118.75 | |
| DEP 134.025 | (NORTH) | (SOUTH) | | | | |



| | | | | | | |
|--|--|----------------------|-------|---------------------|---------|-------|
| VGSi and RNAV glidepath not coincident (VGSi Angle 3.00/TCH 68). | | 5900 | 10000 | CIDMU | tr 081° | LIMEX |
| | | *LNAV only | | | | |
| SARAH 9000 | | *5740 | | | | |
| GP 3.00° TCH 55 | | SUNKE 1.1 NM to RW07 | | | | |
| 7 NM | | 3.9 NM | | | | |
| CATEGORY | | A | B | C | D | |
| LPV DA | | 5552/18 | | 200 (200-½) | | |
| LNAV/VNAV DA | | 5626/24 | | 274 (200-½) | | |
| LNAV MDA | | 5720/24 368 (300-½) | | 5720/26 368 (300-½) | | |

ELEV 5434

TDZE 5352

HIRL all Rwys
TDZ/CL Rwys 7, 16L, 16R, 17R, 26, 34L, 34R, 35L, 35R