

WAAS CH 82228 W08A	APP CRS 082°	Rwy Idg 12000 TDZE 5354 Apt Elev 5434
--	------------------------	--

RNAV (GPS) Y RWY 8

DENVER INTL (DEN)

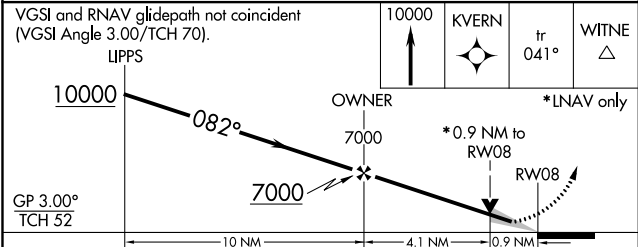
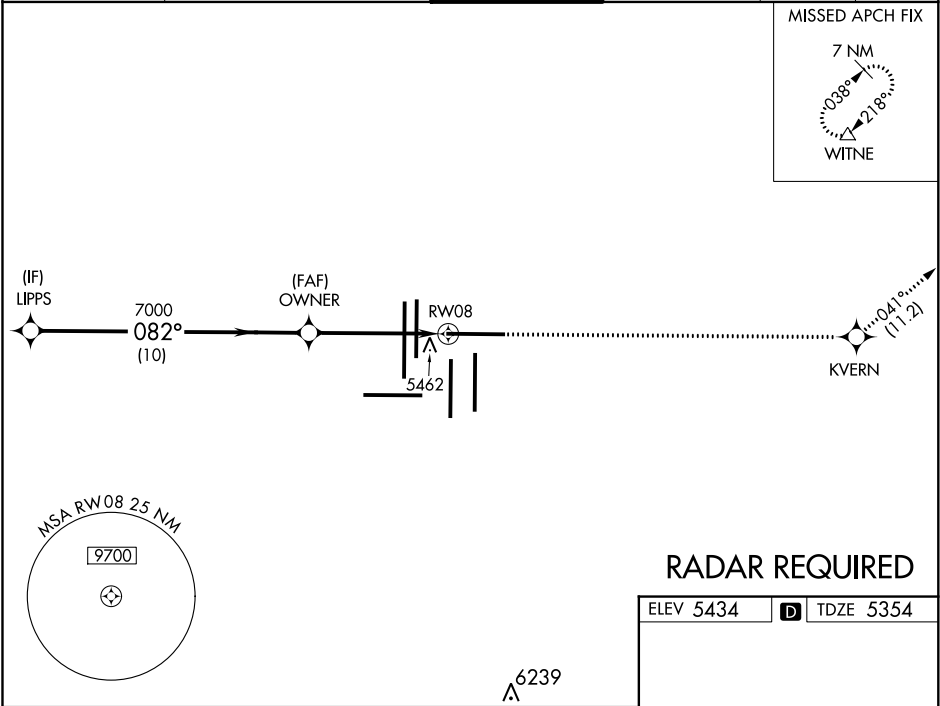
▼

For uncompensated Baro-VNAV systems, LNAV/VNAV NA below -25°C (-13°F) or above 47°C (117°F). Simultaneous approach authorized with Rwy 7. DME/DME RNP- 0.3 NA. LNAV procedure NA during simultaneous operations. Use of FD or AP providing RNAV track guidance required during simultaneous operations. For inoperative MALSR, increase LNAV Cat C/D visibility to RVR 5500. # RVR 1800 authorized with use of FD or AP or HUD to DA.

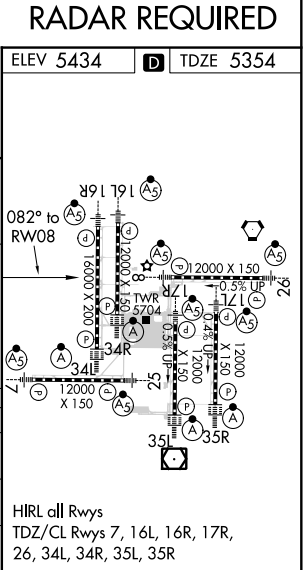
MALSR

MISSED APPROACH: Climb to 10000 direct KVERN and on track 041° to WITNE and hold.

D-ATIS		DENVER APP CON		DENVER TOWER		GND CON		CLNC DEL	CPDLC
ARR	125.6 379.9	119.3 307.3	120.35 379.3	132.35 239.275	121.85 377.1			118.75	
DEP	134.025	(NORTH)	(SOUTH)						



CATEGORY	A	B	C	D
LPV DA #	5554/24		200 (200-½)	
LNAV/VNAV DA	5833/60		479 (400-1¼)	
LNAV MDA	5720/24 366 (300-½)		5720/35 366 (300-⅝)	



SW-1, 03 DEC 2020 to 31 DEC 2020

SW-1, 03 DEC 2020 to 31 DEC 2020