

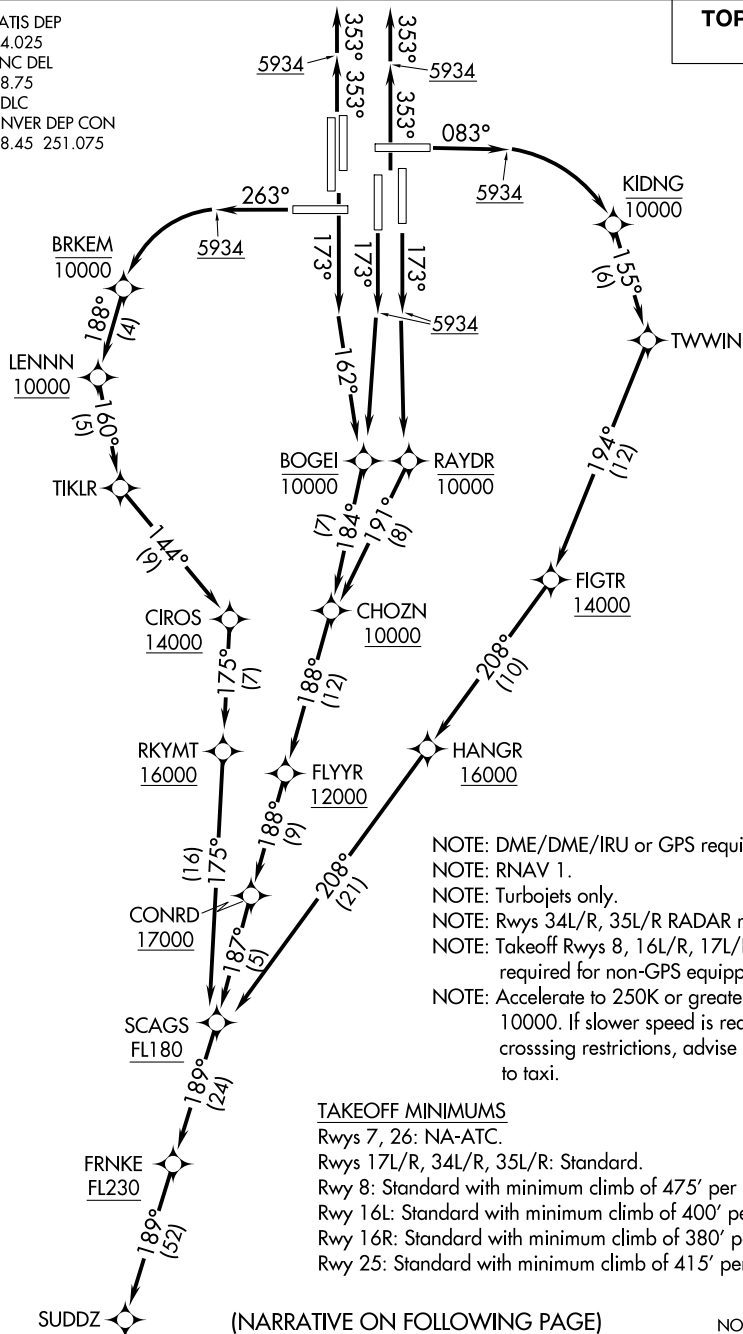
SUDDZ ONE DEPARTURE (RNAV)

AL-9077 (FAA)

DENVER INTL (DEN)
DENVER, COLORADO

D-ATIS DEP
134.025
CLNC DEL
118.75
CPDLC
DENVER DEP CON
128.45 251.075

TOP ALTITUDE:
FL230



NOTE: DME/DME/IRU or GPS required.

NOTE: RNAV 1.

NOTE: Turbojets only.

NOTE: Rwy 34L/R, 35L/R RADAR required.

NOTE: Takeoff Rwy 8, 16L/R, 17L/R, 25, RADAR required for non-GPS equipped aircraft.

NOTE: Accelerate to 250K or greater upon reaching 10000. If slower speed is required to meet crossing restrictions, advise CLNC DEL prior to taxi.

TAKEOFF MINIMUMS

Rwys 7, 26: NA-ATC.

Rwys 17L/R, 34L/R, 35L/R: Standard.

Rwy 8: Standard with minimum climb of 475' per NM to 5934.

Rwy 16L: Standard with minimum climb of 400' per NM to 5934.

Rwy 16R: Standard with minimum climb of 380' per NM to 5934.

Rwy 25: Standard with minimum climb of 415' per NM to 5934.

NOTE: Chart not to scale.

SUDDZ ONE DEPARTURE (RNAV)

(SUDDZ1.SUDDZ) 26MAR20

DENVER, COLORADO
DENVER INTL (DEN)

SW-1, 03 DEC 2020 to 31 DEC 2020