

WAAS CH <b>45635</b> <b>W33A</b>	APP CRS <b>330°</b>	Rwy Idg TDZE <b>7926</b> Apt Elev <b>7950</b>	<b>8303</b>
--	------------------------	---	-------------

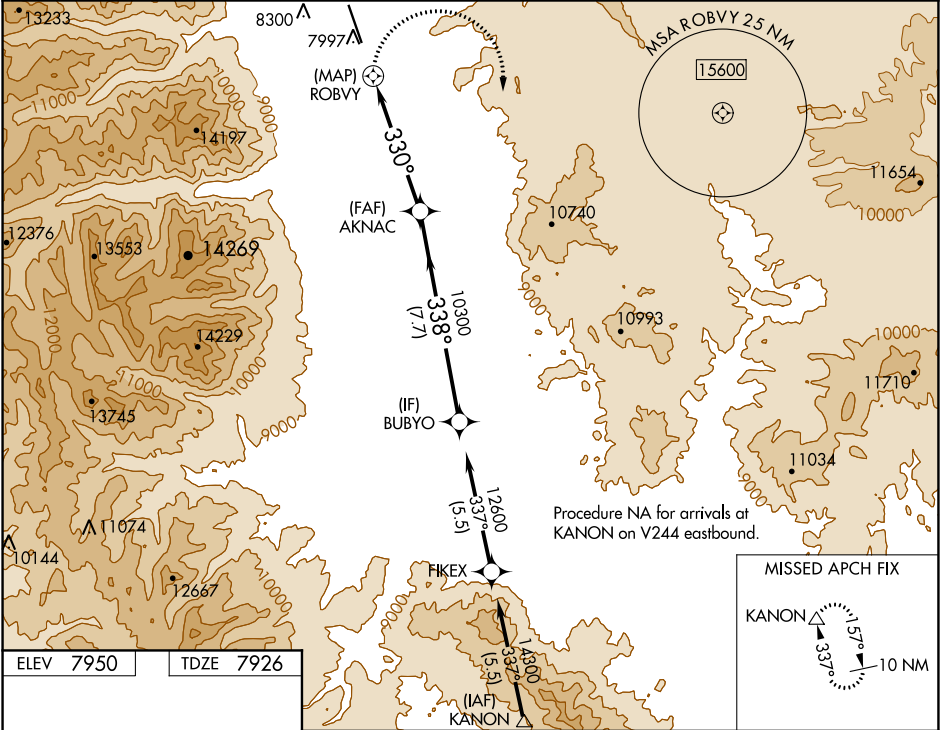
**RNAV (GPS) RWY 33**  
CENTRAL COLORADO RGNL (A/EJ)

**NA**  
-22°C

Circling NA northeast of Rwy 15-33. DME/DME RNP-0.3 NA.  
When local altimeter setting not received, use Salida altimeter setting and increase all MDA 100 feet. VDP NA with Salida altimeter setting.  
#Missed approach requires minimum climb of 425 feet per NM to 14100.

**MISSED APPROACH:** Climbing right turn to 16000 direct KANON and hold, continue climb-in-hold to 16000.

AWOS-3 <b>132.925</b>	DENVER CENTER <b>119.85 363.15</b>	UNICOM <b>122.8 (CTAF) 0</b>
--------------------------	---------------------------------------	---------------------------------



16000 KANON		VGSI and descent angles not coincident (VGSI Angle 3.00/TCH 41).		BUBYO	
*LNAV only.		*1.8 NM to ROBKY		AKNAC	
ROBKY		330°		10300	
1.3		1.8 NM		3.4 NM	
A		B		C	
#LP	MDA	8960-1½	1034 (1100-1½)	8960-3	NA
LP	MDA	9840-1½	1914 (1900-1½)	9840-3	NA
#LNAV	MDA	9300-1½	1374 (1400-1½)	9300-3	NA
LNAV	MDA	9980-1½	2054 (2100-1½)	9980-3	NA
CIRCLING	MDA	9980-1½	2030 (2100-1½)	9980-3	NA

SW-1, 03 DEC 2020 to 31 DEC 2020

SW-1, 03 DEC 2020 to 31 DEC 2020