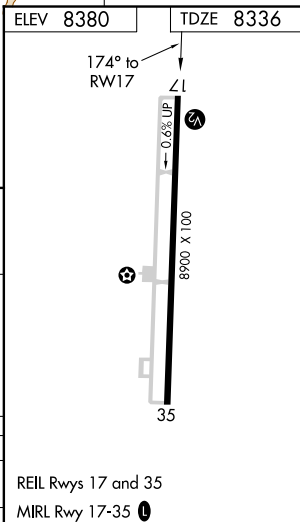
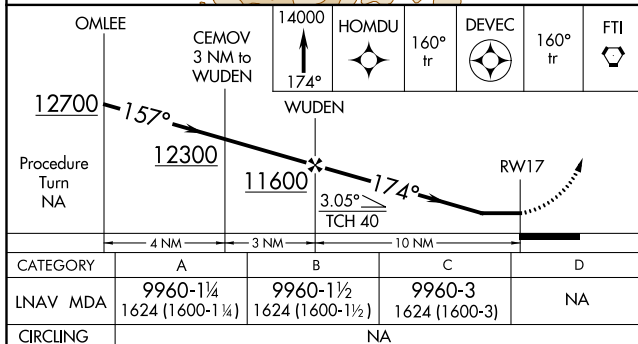
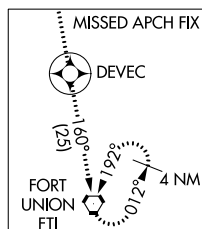
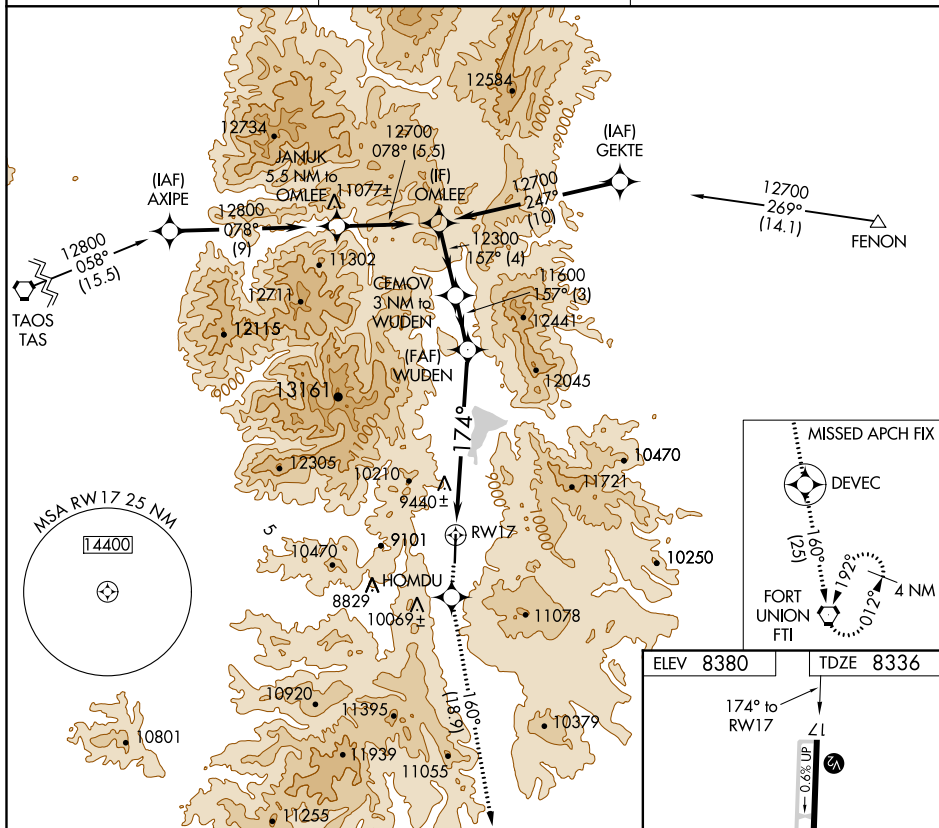


RNAV (GPS) RWY 17
ANGEL FIRE (AXX)

MISSED APPROACH: Climb to 14000 via 174° course to HOMDU and via 160° track to DEVEC and 160° track to FTI VORTAC and hold.

UNICOM
122.8 (CTAF) **L**

SW-1, 03 DEC 2020 to 31 DEC 2020