

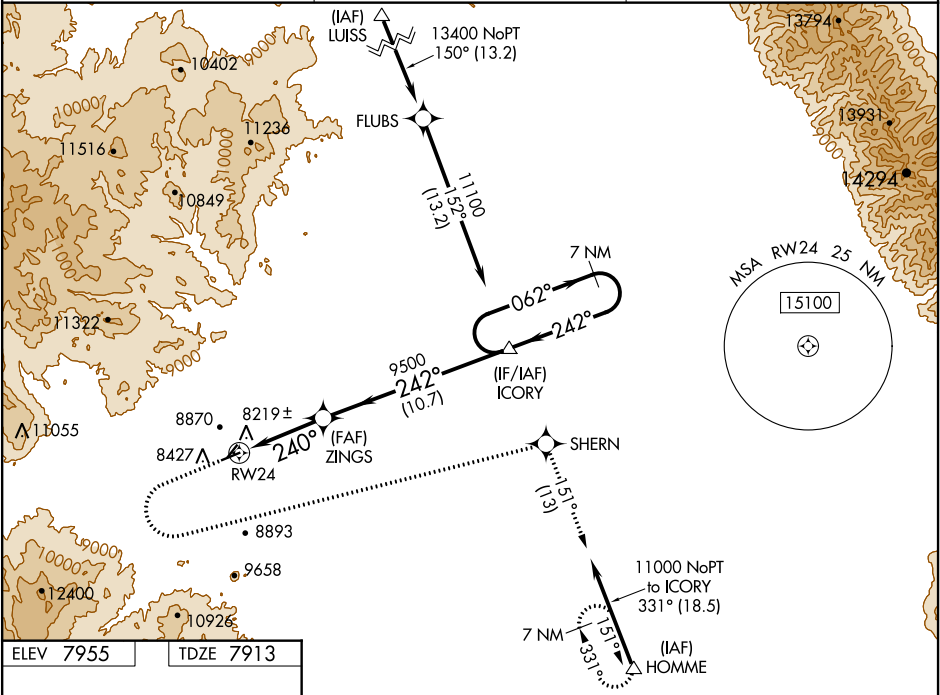
WAAS CH 93740 W24A	APP CRS 240°	Rwy ldg TDZE Apt Elev	6051 7913 7955
---------------------------------	------------------------	-----------------------------	---

RNAV (GPS) RWY 24
ASTRONAUT KENT ROMINGER (R/CV)

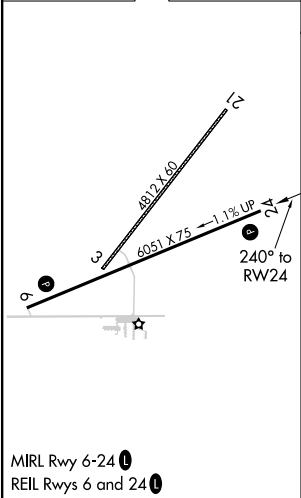
⚠ For uncompensated Baro-VNAV systems, LNAV/VNAV NA below -30°C (-22°F) or above 54°C (130°F). Circling NA northwest of Rwy 6-24. Circling Rwy 6 NA at night. DME/DME RNP-0.3 NA. Circling NA to Rwy 3/21.

MISSED APPROACH: Climb to 8600 then climbing left turn to 11100 direct SHERN and on track 151° to HOMME and hold. #Missed approach requires a minimum climb of 310 feet per NM to 9200.

AWOS-3PT 118.275	DENVER CENTER 128.375 379.95	CTAF 122.90
----------------------------	--	-----------------------



ELEV 7955	TDZE 7913
------------------	------------------



8600	11100	SHERN	tr 151°	HOMME	VGSI and RNAV glidepath not coincident (VGSI Angle 3.00/TCH 40).
					7 NM Holding Pattern
*LNAV only					ICORY
ZINGS					11100
*2.3 NM to RW24					GP 3.00° TCH 51
RW24					
2.3 NM					2.6 NM
10.7 NM					
CATEGORY	A	B	C	D	
LPV DA #	8163-1	250 (300-1)		NA	
LPV DA	8220-1 1/2	307 (300-1 1/2)		NA	
LNAV/VNAV DA	8443-1 7/8	530 (500-1 7/8)		NA	
LNAV MDA	8680-1	8680-1 1/4		NA	
	767 (800-1)	767 (800-1 1/4)			
CIRCLING	8700-1	8840-1 1/4		NA	
	745 (800-1)	885 (900-1 1/4)			

SW-1, 03 DEC 2020 to 31 DEC 2020

SW-1, 03 DEC 2020 to 31 DEC 2020