

VORTAC CEC	APP CRS	Rwy Idg
109.0	131°	5002
Chan 27		TDZE 60
		Apt Elev 61

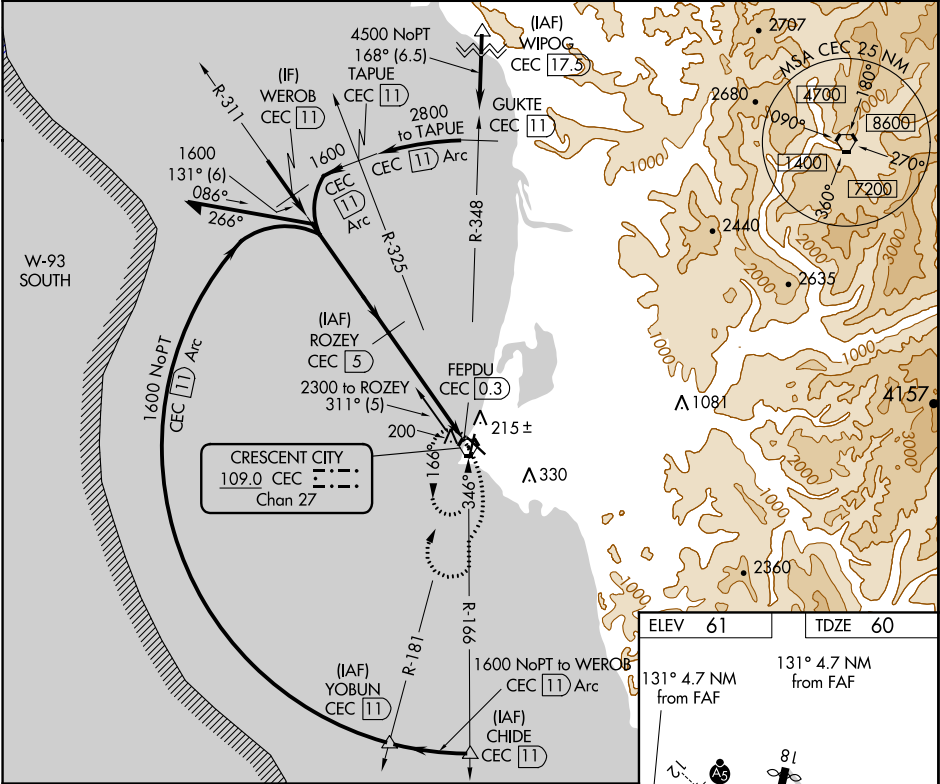
VOR/DME RWY 12
JACK MC NAMARA FIELD (CEC)

⚠ VDP NA with Brookings altimeter setting. When local altimeter setting not received, use Brookings altimeter setting and increase all MDA 100 feet; increase S-12 Cat C/D, and Circling Cat D visibility ¼ mile, and Circling Cat C visibility ½ mile. For inop MALSR, increase S-12 Cats A/B visibility to 1 mile, Cats C/D visibility to 1½ mile. For inop MALSR when using Brookings altimeter setting, increase S-12 Cats A/B visibility to 1 mile, Cats C/D visibility to 1½ mile. Night Landing: Rwy 18, 30 NA. Night Landing: Rwy 36 operational VGSi required, remain on or above VGSi glidepath until threshold.

MALSR

MISSED APPROACH:
Climbing right turn to 3000 on CEC VORTAC R-166 then right turn direct CEC VORTAC and hold.

ASOS 119.925	SEATTLE CENTER 124.85 306.3	UNICOM 122.8 (CTAF) 0
-----------------	--------------------------------	--------------------------



Remain within 10 NM

ROZEY CEC 5

311°

1600

131°

1600

2.98° TCH 50

3.6 NM

1.2 NM

FEVDU CEC 0.3

CEC 1.4

3000

CEC R-166

CEC

CATEGORY	A	B	C	D
S-12	480-¾	420 (500-¾)	480-1	420 (500-1)
CIRCLING	540-1	479 (500-1)	640-1½ 579 (600-1½)	640-2 579 (600-2)

ELEV 61

TDZE 60

131° 4.7 NM from FAF

131° 4.7 NM from FAF

HIRL Rwy 12-30 0

REIL Rws 18, 30 and 36 0

MIRL Rwy 18-36 0