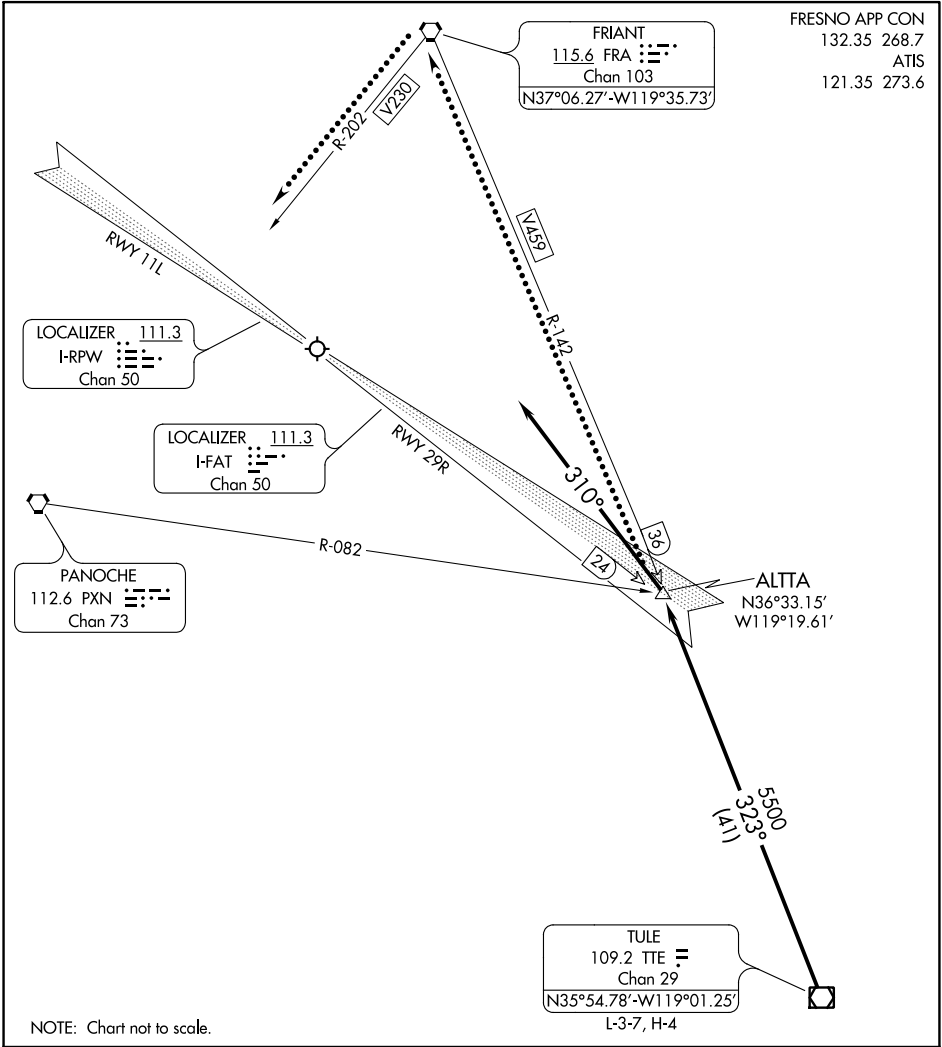


ALTA NINE ARRIVAL



ARRIVAL ROUTE DESCRIPTION

From over TULE (TTE) VOR/DME on TTE R-323 and FRIANT (FRA) VORTAC R-142 to ALTIA. Expect ILS or LOC RWY 29R approach. For Rwy 11L operations: Depart ALTIA heading 310° and expect RADAR vectors to LOC Y RWY 11L.

LOST COMMUNICATIONS: Rwy 11L: Proceed to FRA VORTAC on V459, then on V230, execute the LOC Y RWY 11L approach.

ALTA NINE ARRIVAL

SW-2, 03 DEC 2020 to 31 DEC 2020

SW-2, 03 DEC 2020 to 31 DEC 2020