

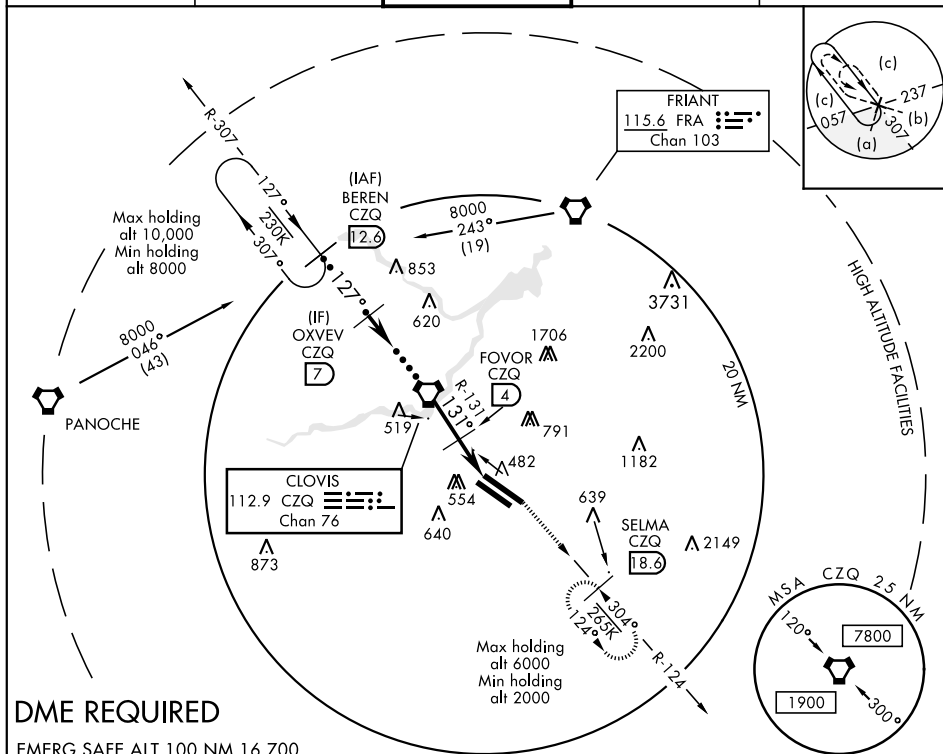
## HI-TACAN RWY 11L

VORTAC CZQ <b>112.9</b> Chan <b>76</b>	APCH CRS <b>131°</b>	Rwy Idg 11L <b>9539</b> 11R <b>8008</b> TDZE 11L <b>336</b> 11R <b>333</b> Arpt Elev <b>336</b>
--	-------------------------	---

JAL-162 [USAF] FRESNO YOSEMITE INTL (KFAT)

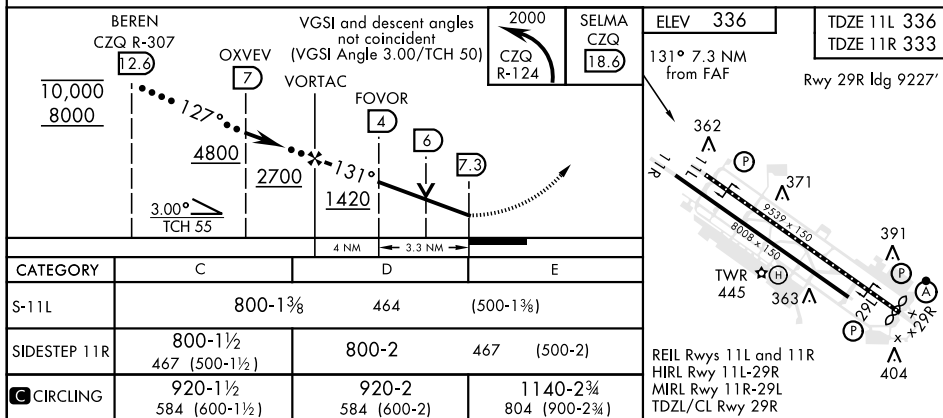
**MISSED APPROACH:** Climbing left turn to 2000 on CZQ VORTAC R-124 to SELMA / 18.6 DME and hold.

ATIS 121.35 273.6	FRESNO APP CON 119.6 351.95	FRESNO TOWER 118.2 251.1	GND CON 121.7 348.6	CLNC DEL 124.35 348.6
----------------------	--------------------------------	-----------------------------	------------------------	--------------------------



## DME REQUIRED

EMERG SAFE ALT 100 NM 16,700



FRESNO, CALIFORNIA

36° 47' N - 119° 43' W

FRESNO YOSEMITE INTL (KFAT)

Amdt 2A 10OCT19

HI-TACAN RWY 11L