

LOC/DME I-FAT 111.3 Chan 50	APP CRS 292°	Rwy Idg TDZE Apt Elev	29R 9227 333 336	29L 8008 331 336
-------------------------------------------------	------------------------	-----------------------------	------------------------------------------------	------------------------------------------------

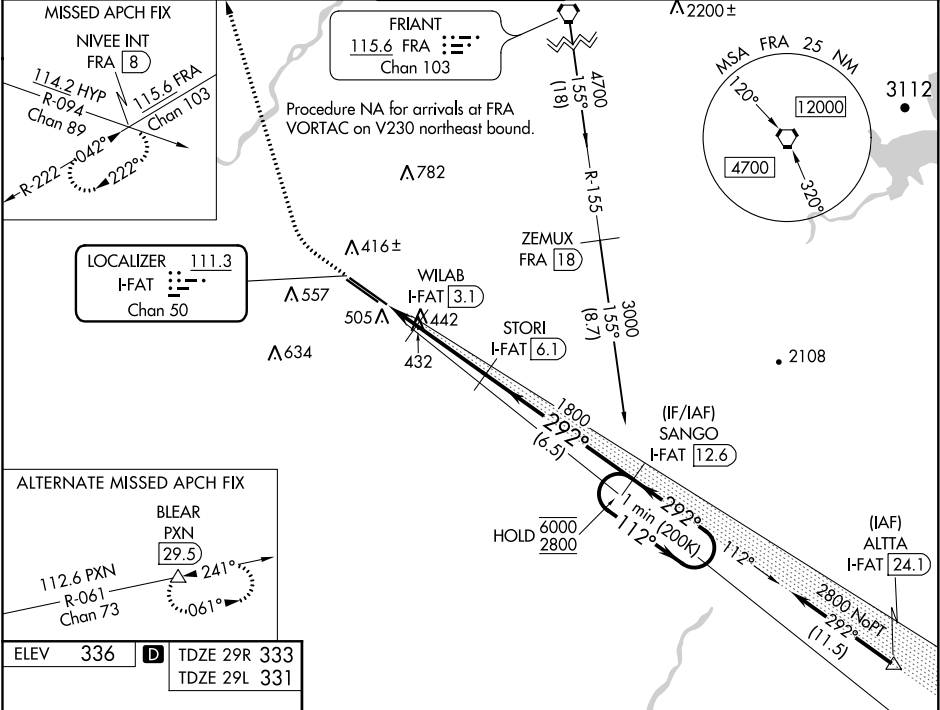
ILS Y or LOC Y RWY 29R
FRESNO YOSEMITE INTL (FAT)

DME required.
For inop ALS, increase S-ILS 29R Cat E visibility to RVR 4000 and S-LOC 29R Cat E visibility to RVR 5500.
Hold in lieu of PT NA for Cat E aircraft.

ALS-2
Rwy 29R

MISSED APPROACH: Climb to 800 then climbing right turn to 5500 on heading 330° and FRA VORTAC R-222 to NIVEE INT/FRA 8 DME and hold, continue climb-in-hold to 5500.

ATIS 121.35 273.6	FRESNO APP CON 119.6 351.95	FRESNO TOWER 118.2 251.1	GND CON 121.7 348.6	CLNC DEL 124.35 348.6
-----------------------------	---------------------------------------	------------------------------------	-------------------------------	---------------------------------



REIL Rws 11L and 11R
HIRL Rwy 11L-29R
MIRL Rwy 11R-29L
TDZ/CL Rwy 29R

800 ↑	5500 hdg 330°	FRA R-222	NIVEE INT	VGSI and ILS glidepath not coincident (VGSI Angle 3.00/TCH 76).		One Minute Holding Pattern	
*LOC only				STORI I-FAT 6.1	SANGO I-FAT 12.6		
				1800	1800	112° → 6000	← 292° 2800
				820*			
				1.4 NM	3 NM	6.5 NM	GS 3.00° TCH 55
CATEGORY	A	B	C	D	E		
S-ILS 29R	533/18 200 (200-½)						
S-LOC 29R	700/24	367 (400-½)	700/35 367 (400-¾)				
SIDESTEP RWY 29L	700/55	369 (400-1)	700-1½ 369 (400-1½)	700-2 369 (400-2)			
C CIRCLING	820-1	484 (500-1)	920-1½ 584 (600-1½)	920-2 584 (600-2)	1140-2¾ 804 (900-2¾)		

SW-2, 03 DEC 2020 to 31 DEC 2020

SW-2, 03 DEC 2020 to 31 DEC 2020