

WAAS CH 81803 W29A	APP CRS 292°	Rwy Idg 9227 TDZE 333 Apt Elev 336
--	------------------------	---

RNAV (GPS) RWY 29R

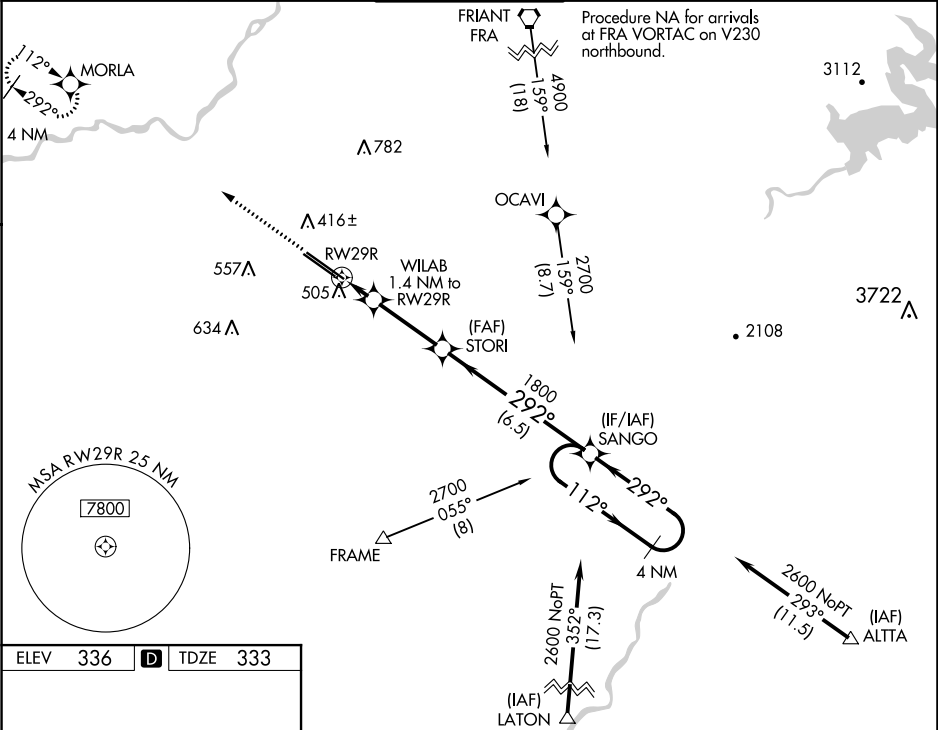
FRESNO YOSEMITE INTL (FAT)

For uncompensated Baro-VNAV systems, LNAV/VNAV NA below 0°C (32°F) or above 54°C (130°F). DME/DME RNP-0.3 NA.

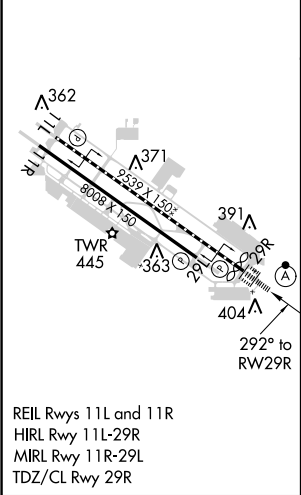
ALSF-2

MISSED APPROACH: Climb to 2000 direct MORLA and hold.

ATIS 121.35 273.6	FRESNO APP CON 119.6 351.95	FRESNO TOWER 118.2 251.1	GND CON 121.7 348.6	CLNC DEL 124.35 348.6
-----------------------------	---------------------------------------	------------------------------------	-------------------------------	---------------------------------



ELEV 336	D	TDZE 333
----------	---	----------



2000	MORLA	VGSI and RNAV glidepath not coincident (VGSI Angle 3.00/TCH 76).	4 NM	SANGO Holding Pattern
*LNAV only		WILAB 1.4 NM to RW29R	1800	112° 2600
		RW29R	292°	292°
		820	1800	GP 3.00° TCH 58
		1.4 NM	3 NM	6.5 NM
CATEGORY	A	B	C	D
LPV DA		533/18	200 (200-½)	
LNAV/VNAV DA		689/30	356 (400-⅝)	
LNAV MDA	760/24	427 (500-½)	760/40	427 (500-¾)
CIRCLING	820-1	484 (500-1)	920-1½ 584 (600-1½)	920-2 584 (600-2)