

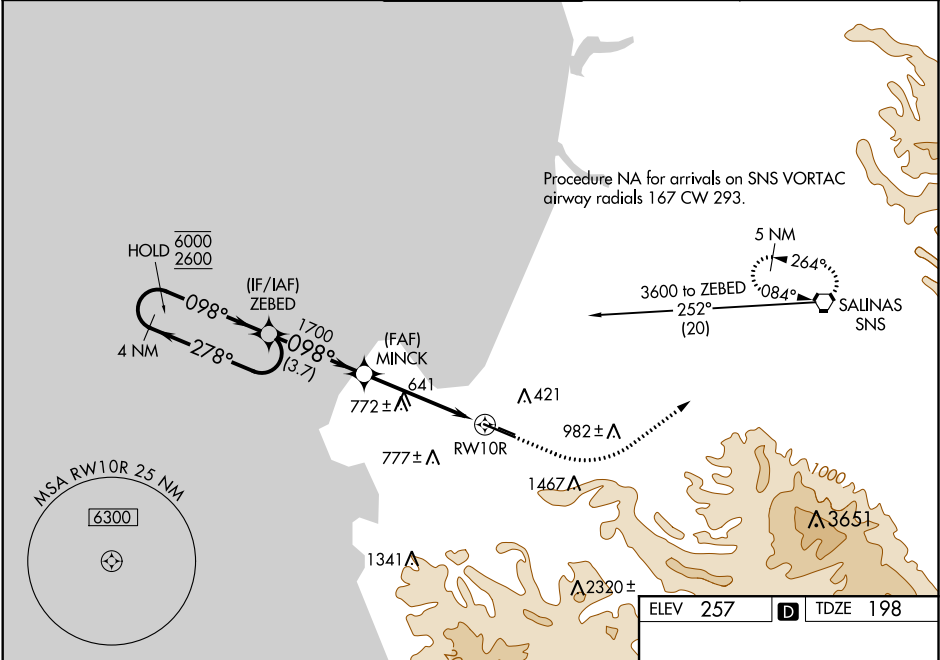
WAAS CH 69602 W10A	APP CRS 098°	Rwy Idg TDZE 198 Apt Elev 257
--	------------------------	---

RNAV (GPS) RWY 10R

MONTEREY RGNL (MRY)

RNP APCH.	MALSR	MISSED APPROACH: Climb to 1000 then climbing left turn to 5000 direct SNS VORTAC and hold, continue climb-in-hold to 5000.
<div><div>▼</div><div>⚠</div></div> Circling NA south of Rwy 10R and 28L. For uncompensated Baro-VNAV systems, LNAV/VNAV NA below 0°C or above 54°C. For inop ALS, increase LPV visibility all Cats to 1½ SM, LNAV/VNAV visibility all Cats and LNAV Cat C/D to 2½ SM.	<div><div>AS</div><div></div></div>	

ATIS 119.25	NORCAL APP CON 133.0 251.15 (360°-150°) 127.15 307.125 (151°-359°)	MONTEREY TOWER ★ 118.4 (CTAF) 0 257.8	GND CON 120.875 348.6	CLNC DEL 135.45	UNICOM 122.95
-----------------------	--	--	---------------------------------	---------------------------	-------------------------



4 NM Holding Pattern		ZEBED	MINCK	1000 5000 SNS		ELEV 257 TDZE 198
6000 2600		←278°	098°→	098°	*2.4 NM to RWY 10R	*LNAV only
GP 3.00° TCH 45		1700			RWY 10R	
		3.7 NM	2.3 NM	2.4 NM		
CATEGORY	A	B	C	D		
LPV DA	718-1½ 520 (500-1½)					
LNAV/VNAV DA	789-1¾ 591 (600-1¾)					
LNAV MDA	980/24 782 (800-½)	980/40 782 (800-¾)	980-1¾ 782 (800-1¾)			
CIRCLING	980-1 723 (800-1)	980-1¼ 723 (800-1¼)	1280-3 1023 (1100-3)	NA		
						MIRL Rwy 10L-28R HIRL Rwy 10R-28L 0 REIL Rwy 28L 0 REIL Rwy 10L and 28R

SW-2, 03 DEC 2020 to 31 DEC 2020

SW-2, 03 DEC 2020 to 31 DEC 2020