

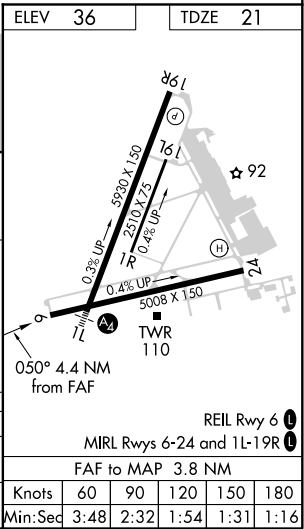
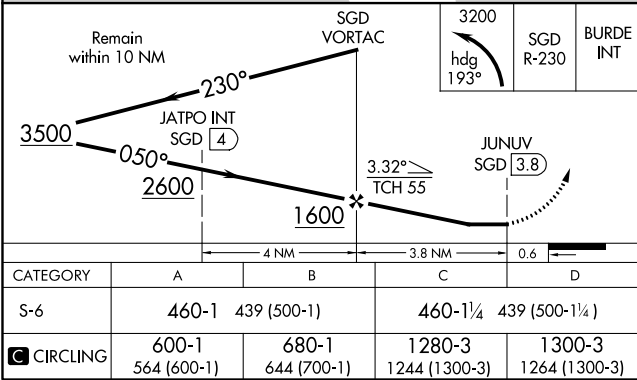
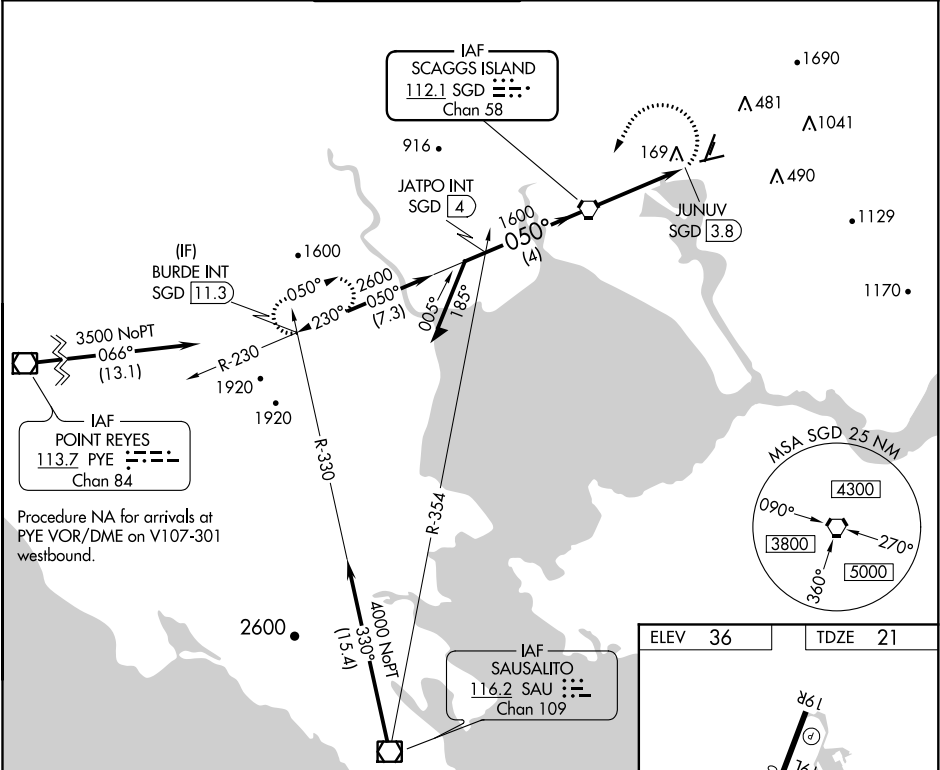
VORTAC	SGD	APP CRS	Rwy Idg	5008
112.1		050°	TDZE	21
Chan 58			Apt Elev	36

VOR RWY 6  
NAPA COUNTY (APC)

**⚠** Rwy 6 helicopter visibility reduction below 1 SM NA. Straight-in Rwy 6 NA at night, Circling Rwy 6 NA at night. Circling Cats A/B/C NA northeast of Rwys 19R and 24. Circling Cat D NA east of Rwy 19L-1R.

**MISSED APPROACH:** Climbing left turn to 3200 on heading 193° and SGD VORTAC R-230 to BURDE INT/SGD 11.3 DME and hold, continue climb-in-hold to 3200.

ATIS	OAKLAND CENTER	NAPA TOWER ★	GND CON	CLNC DEL	UNICOM
124.05	127.8 353.5	118.7 (CTAF) 0 257.8	121.7	127.85	122.95



SW-2, 03 DEC 2020 to 31 DEC 2020

SW-2, 03 DEC 2020 to 31 DEC 2020