

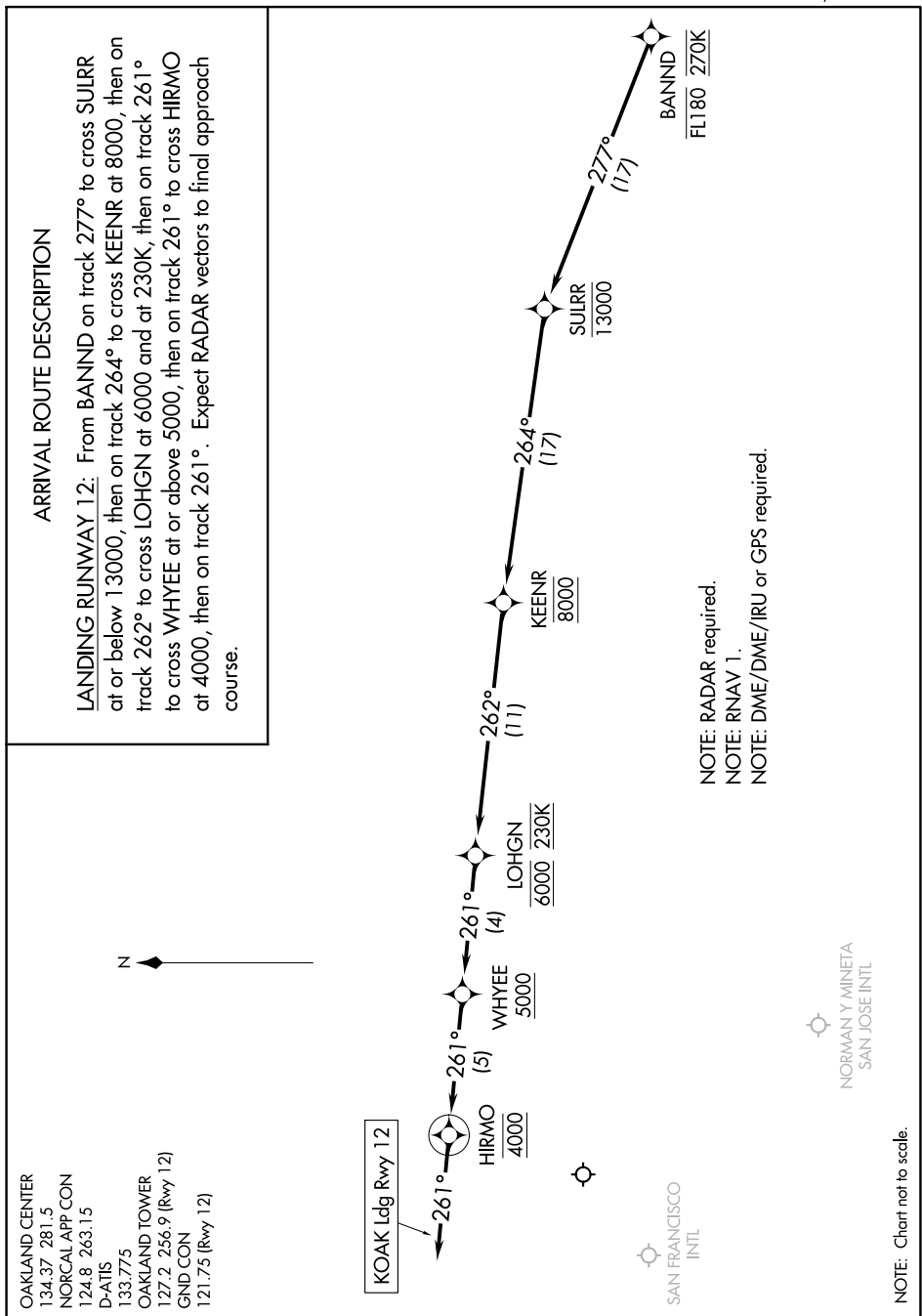
BANND TWO ARRIVAL (RNAV) Arrival Routes

OAKLAND, CALIFORNIA

ARRIVAL ROUTE DESCRIPTION

LANDING RUNWAY 12: From BANNID on track 277° to cross SULIR at or below 13000, then on track 264° to cross KEENR at 8000, then on track 262° to cross LOHGN at 6000 and at 230K, then on track 261° to cross WHYEE at or above 5000, then on track 261° to cross HIRMO at 4000, then on track 261°. Expect RADAR vectors to find approach course.

NOTE: RADAR required.
NOTE: RNAV 1.
NOTE: DME/DME/IRU or GPS required.



NOTE: Chart not to scale.