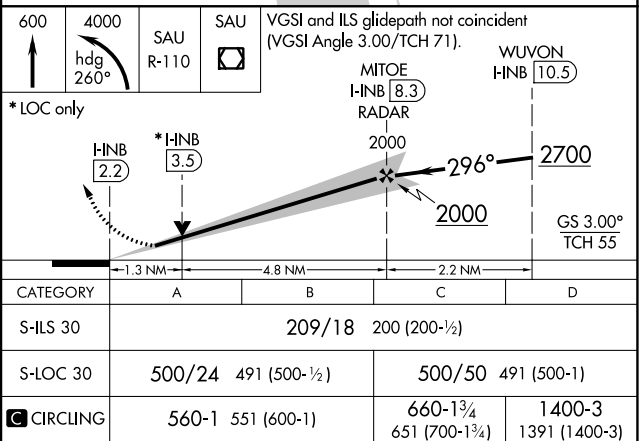
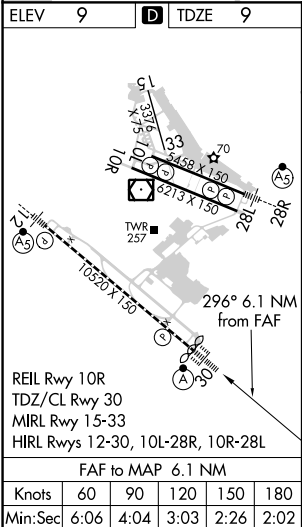
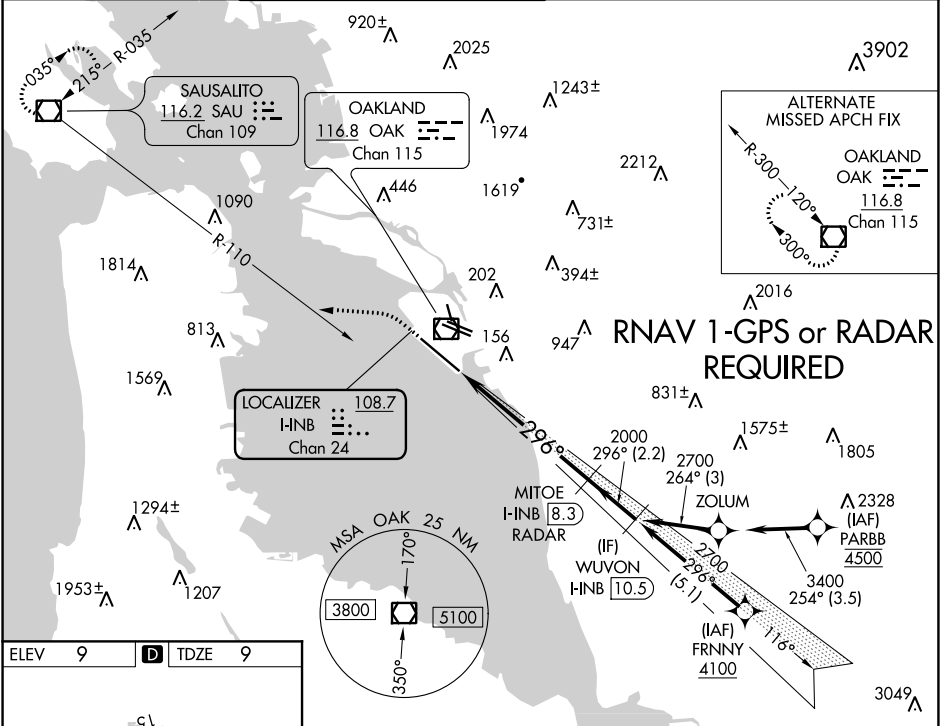


LOC/DME I-INB 108.7 Chan 24	APP CRS 296°	Rwy Idg TDZE Apt Elev 10000 9 9
---	------------------------	---

ILS or LOC RWY 30
METROPOLITAN OAKLAND INTL (OAK)

DME or RADAR required.		ALSF-2	MISSED APPROACH: Climb to 600 then climbing left turn to 4000 on heading 260° and on SAU VOR/DME R-110 to SAU VOR/DME and hold, continue climb-in-hold to 4000.	
------------------------	--	--------	---	--

D-ATIS 133.775	NORCAL APP CON 125.35 263.15	OAKLAND TOWER 118.3 291.65 (Rwys 10L/R-28L/R, 15-33) 127.2 256.9 (Rwy 12-30)	GND CON 121.9 (Rwys 10L/R-28L/R, 15-33) 121.75 (Rwy 12-30)	CLNC DEL 121.1	CPDLC
--------------------------	--	--	--	--------------------------	-------



SW-2, 03 DEC 2020 to 31 DEC 2020

SW-2, 03 DEC 2020 to 31 DEC 2020