

APP CRS <b>278°</b>	Rwy Idg TDZE Apt Elev	<b>5458</b> <b>7</b> <b>9</b>
------------------------	-----------------------------	-------------------------------------

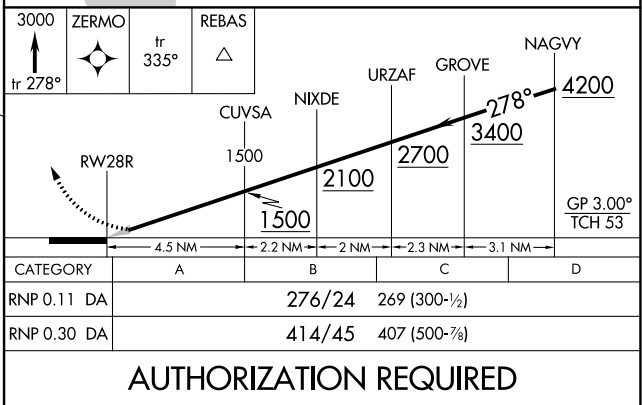
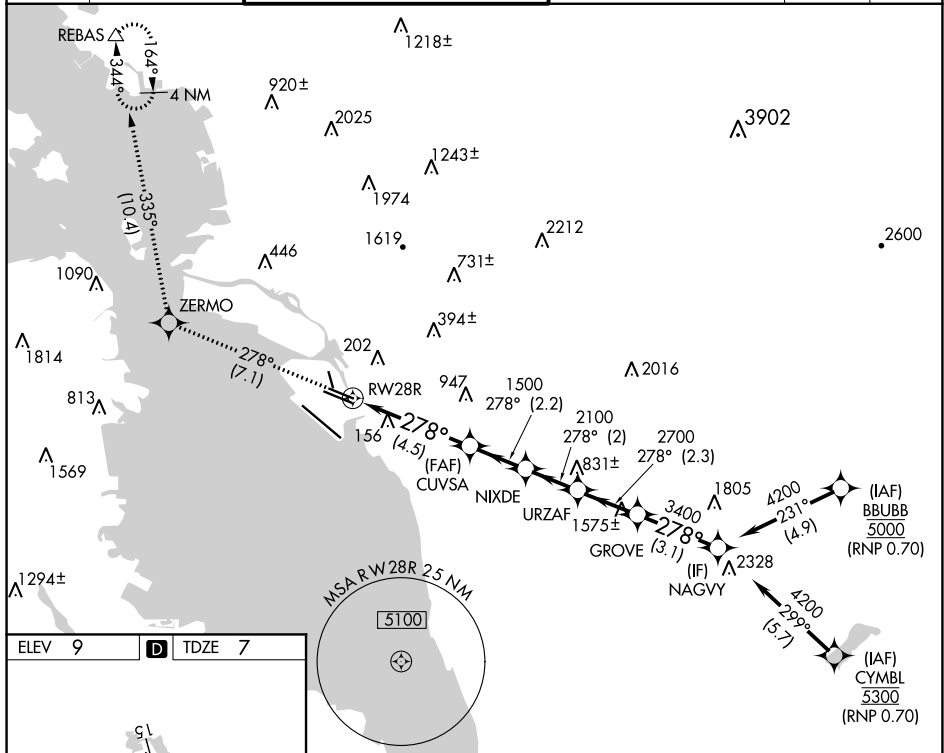
RNAV (RNP) Z RWY 28R  
METROPOLITAN OAKLAND INTL (OAK)

**T** For uncompensated Baro-VNAV systems, procedure NA below 1°C (34°F) or above 54°C (130°F). For inop MALSR, increase RNP 0.11 DA all Cats visibility to RVR 4500. GPS required.



**MISSED APPROACH:** Climb to 3000 on track 278° to ZERMO and on track 335° to REBAS and hold.

D-ATIS <b>133.775</b>	NORCAL APP CON <b>125.35 263.15</b>	OAKLAND TOWER <b>118.3 291.65</b> (Rwys 10L/R-28L/R, 15-33) <b>127.2 256.9</b> (Rwy 12-30)	GND CON <b>121.9</b> (Rwys 10L/R-28L/R, 15-33) <b>121.75</b> (Rwy 12-30)	CLNC DEL <b>121.1</b>	CPDLC
--------------------------	--	--	--	--------------------------	-------



## AUTHORIZATION REQUIRED