

APP CRS	Rwy Idg	10000
296°	TDZE	9
	Apt Elev	9

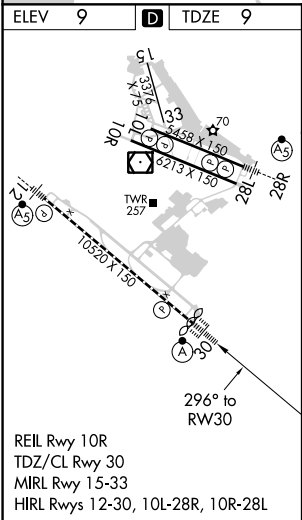
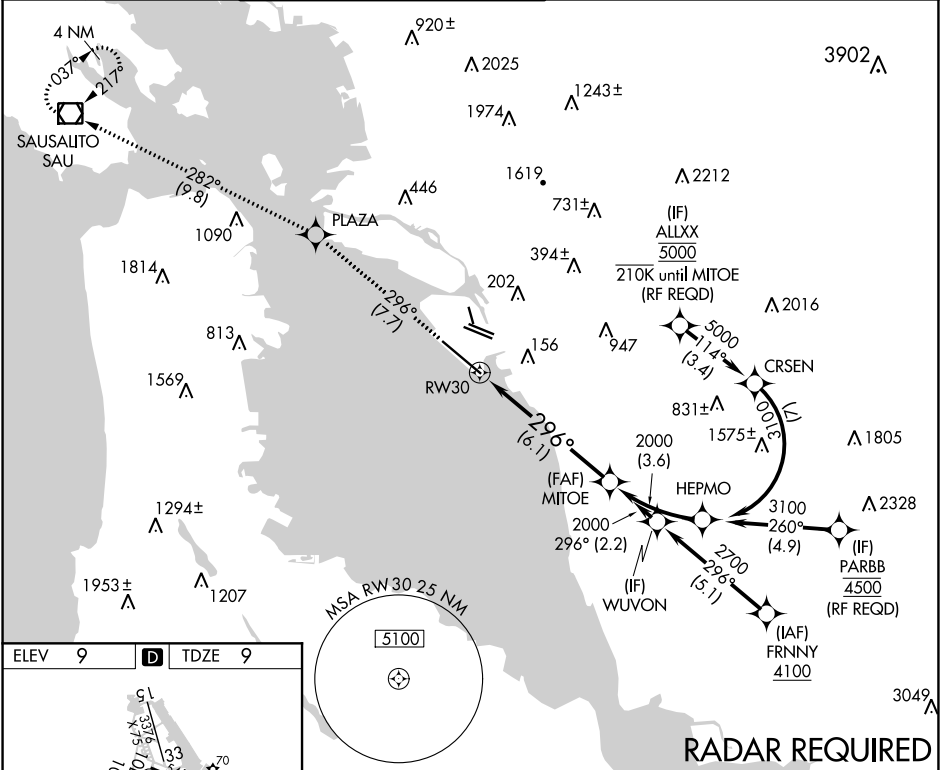
RNAV (RNP) Z RWY 30
METROPOLITAN OAKLAND INTL (OAK)



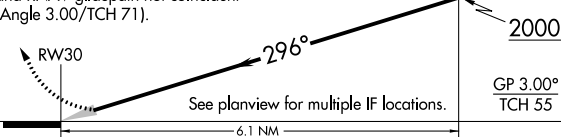
GPS required. For uncompensated Baro-VNAV systems, procedure NA below 1°C (34°F) or above 54°C (130°F). For inop ALS increase RNP 0.11 visibility all Cats to RVR 4000.



MISSED APPROACH: Climb to 4000 on track 296° to PLAZA and on track 282° to SAU VOR/DME and hold, continue climb-in-hold to 4000.

D-ATIS	NORCAL APP CON	OAKLAND TOWER	GND CON	CLNC DEL	CPDLC
133.775	125.35 263.15	118.3 291.65 (Rwys 10L/R-28L/R, 15-33) 127.2 256.9 (Rwy 12-30)	121.9 (Rwys 10L/R-28L/R, 15-33) 121.75 (Rwy 12-30)	121.1	



4000 ↑ tr 296°	PLAZA 	SAU 	MITOE 2000	
VGSI and RNAV glidepath not coincident (VGSI Angle 3.00/TCH 71).				
				
CATEGORY	A	B	C	D
RNP 0.11 DA		267/24	258 (300- ½)	
RNP 0.30 DA		317/24	308 (400- ½)	
AUTHORIZATION REQUIRED				