

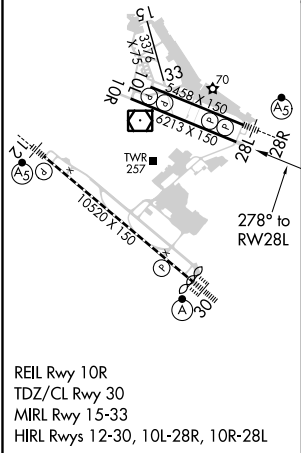
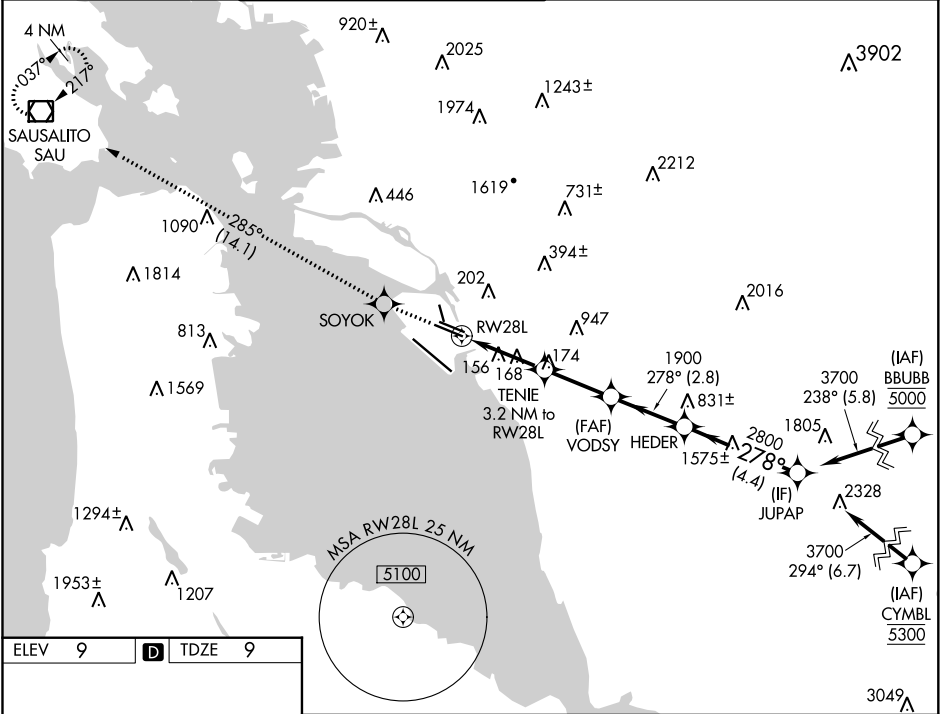



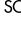

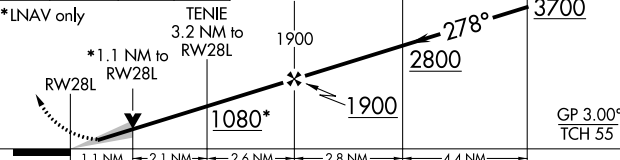

WAAS CH 72700 W28A	APP CRS 278°	Rwy Idg 6213 TDZE 9 Apt Elev 9
--	------------------------	---

RNAV (GPS) Y RWY 28L
METROPOLITAN OAKLAND INTL (OAK)

 For uncompensated Baro-VNAV systems, LNAV/VNAV NA below 0°C (32°F) or above 54°C (130°F).  DME/DME RNP-0.3 NA.	MISSED APPROACH: Climb to 4000 direct SOYOK and on track 285° to SAU VOR/DME and hold, continue climb-in-hold to 4000.
--	--

D-ATIS 133.775	NORCAL APP CON 125.35 263.15	OAKLAND TOWER 118.3 291.65 (Rwys 10L/R-28L/R, 15-33) 127.2 256.9 (Rwy 12-30)	GND CON 121.9 (Rwys 10L/R-28L/R, 15-33) 121.75 (Rwy 12-30)	CLNC DEL 121.1	CPDLC
--------------------------	--	--	--	--------------------------	-------



4000	SOYOK	fr 285°	SAU	VGSi and RNAV glidepath not coincident (VGSi Angle 3.00/TCH 50).		
						
*LNAV only						
						
CATEGORY	A		B	C		D
LPV DA	209/40 200 (200-¾)					
LNAV/ VNAV DA	387-1¼ 378 (400-1¼)					
LNAV MDA	420/55 411 (500-1)			420/60 411 (500-1¼)		
 CIRCLING	560-1 551 (600-1)			660-1¾ 651 (700-1¼) 1400-3 1391 (1400-3)		