

(SALAD5.SALAD) 17341
SALAD FIVE DEPARTURE

AL-294 (FAA)

METROPOLITAN OAKLAND INTL (OAK)
OAKLAND, CALIFORNIA

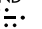
D-ATIS
133.775
CLNC DEL
121.1
CPDLC
GND CON
121.9 (Rwys 28L/R)
OAKLAND TOWER
118.3 291.65 (Rwys 28L/R)
NORCAL DEP CON
120.9 323.2

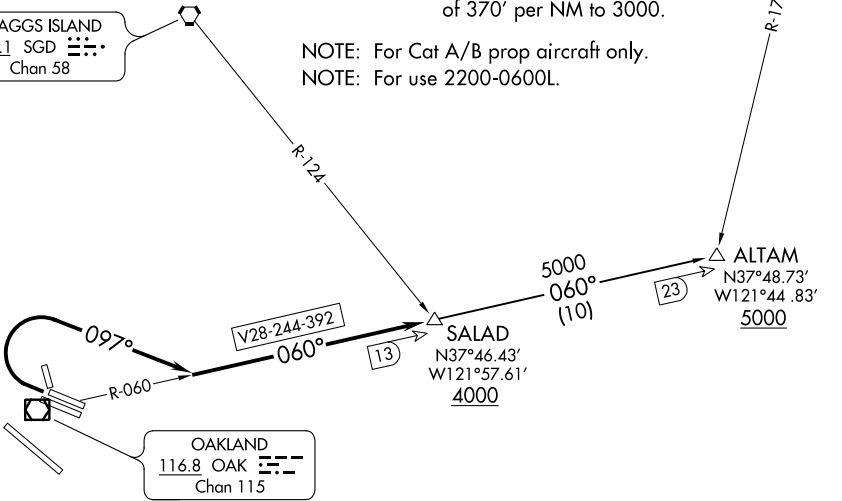
**TOP ALTITUDE:
ASSIGNED BY ATC**

SACRAMENTO
115.2 SAC 
Chan 99

TAKEOFF MINIMUMS
Rwys 10L, 10R, 12, 15, 30, 33: NA-ATC.
Rwys 28L, 28R: Standard with minimum climb
of 370' per NM to 3000.

NOTE: For Cat A/B prop aircraft only.
NOTE: For use 2200-0600L.

SCAGGS ISLAND
112.1 SGD 
Chan 58



NOTE: Chart not to scale.

DEPARTURE ROUTE DESCRIPTION

TAKEOFF RUNWAYS 28 L/R: Climbing right turn heading 097° to intercept OAK VOR/DME R-060 to cross SALAD/OAK 13 DME at or above 4000, thence . . .
. . . on ALTAM transition. Maintain ATC assigned altitude. Expect filed altitude 10 minutes after departure.

ALTAM TRANSITION (SALAD5.ALTAM): From over SALAD on OAK R-060 to ALTAM.