

SW-2, 03 DEC 2020 to 31 DEC 2020

ARRIVAL ROUTE DESCRIPTION

MRLET TRANSITION (MRLET.SHARR1)

RPARK TRANSITION (RPARK.SHARR1)

RUSME TRANSITION (RUSME.SHARR1)

LANDING OAK: From SHARR on track 232° to LOCKE, then on track 232° to cross CATTY at 8000, then on heading 280° or as assigned by ATC.
Expect RADAR vectors to final approach course.

LANDING HWD: From SHARR on track 232° to LOCKE, then on track 232° to cross CATTY at 8000, then on heading 232° or as assigned by ATC.
Expect RADAR vectors to final approach course.

NOTE: RADAR required.

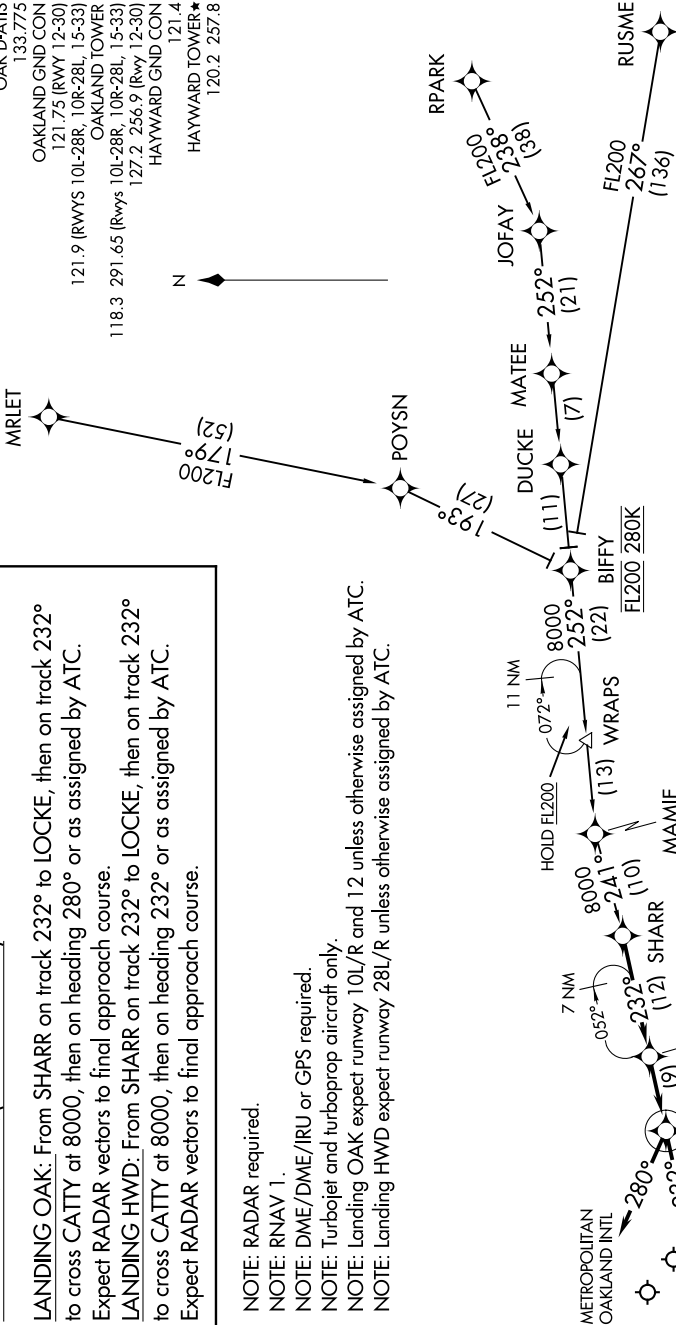
NOTE: RNAV 1.

NOTE: DME/DME/IRU or GPS required.

NOTE: Turbojet and turboprop aircraft only.

NOTE: Landing OAK expect runway 10L/R and 12 unless otherwise assigned by ATC.

NOTE: Landing HWD expect runway 28L/R unless otherwise assigned by ATC.



NOTE: Chart not to scale.

SW-2, 03 DEC 2020 to 31 DEC 2020