
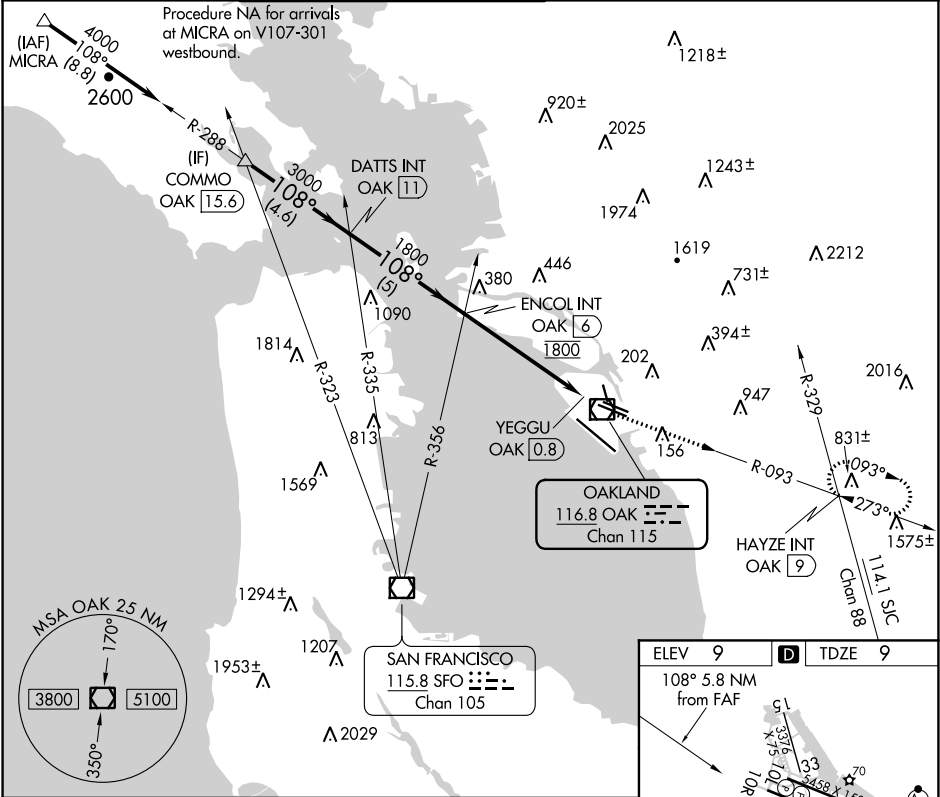


VOR/DME OAK 116.8 Chan 115	APP CRS 108°	Rwy Idg TDZE Apt Elev	6213 9 9
--	------------------------	-----------------------------	-------------------------------------

VOR RWY 10R
METROPOLITAN OAKLAND INTL (OAK)

 Helicopter visibility reduction below 3/4 SM NA.	MISSED APPROACH: Climb to 5300 on OAK VOR/DME R-093 to HAYZE INT/OAK 9 DME and hold, continue climb-in-hold to 5300.
--	--

D-ATIS 133.775	NORCAL APP CON 125.35 263.15	OAKLAND TOWER 118.3 291.65 (Rwys 10L/R-28L/R, 15-33) 127.2 256.9 (Rwy 12-30)	GND CON 121.9 (Rwys 10L/R-28L/R, 15-33) 121.75 (Rwy 12-30)	CLNC DEL 121.1	CPDLC
--------------------------	--	--	--	--------------------------	-------



VGS and descent angles not coincident (VGS Angle 3.00/TCH 50).				
COMMO OAK [15.6]	DATTS INT OAK [11]	ENCLOS INT OAK [6]	OAK [2.3]	YEGGU OAK [0.8]
4000	3000	1800	2.82° TCH 50	5300
4.6 NM	5 NM	3.7 NM	1.5 NM	0.6 NM
CATEGORY	A	B	C	D
S-10R	740-1 731 (800-1)		740-2 731 (800-2)	
CIRCLING	740-1 731 (800-1)		740-2 731 (800-2)	1380-3 1371 (1400-3)

