

WAAS CH 42609 W33A	APP CRS 331°	Rwy Idg TDZE 352 Apt Elev 352
--	------------------------	---

RNAV (GPS) RWY 33

RED BLUFF MUNI (RBL)

⚠ Baro-VNAV NA when using Redding altimeter setting. For uncompensated Baro-VNAV systems, LNAV/VNAV NA below -15°C (5°F) or above 48°C (118°F). DME/DME RNP-0.3 NA. When local altimeter setting not received, use Redding altimeter setting and increase all DA/MDA 80 feet and increase LPV all Cats visibility ¼ SM, LNAV/VNAV all Cats visibility ¼ SM, LNAV Cat C visibility ¼ SM and Circling Cats C and D visibility ¼ SM.

MISSED APPROACH:
Climb to 4000 direct PUVGE and track 028° to HOMAN and hold.

ASOS 120.775	OAKLAND CENTER 132.2 350.3	UNICOM 123.0 (CTAF) 0
------------------------	--------------------------------------	---------------------------------

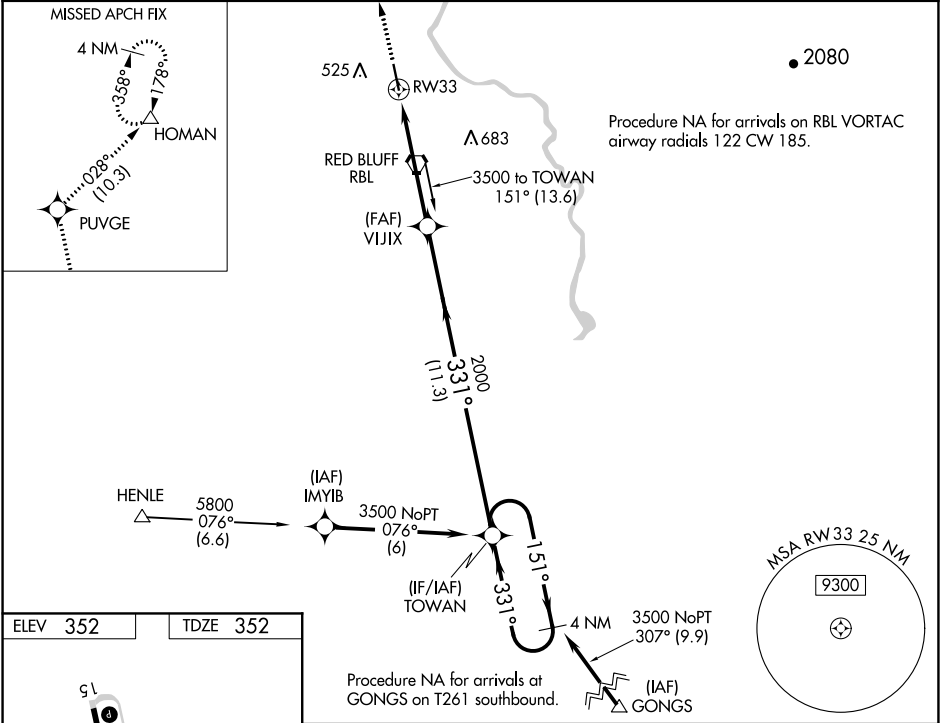


Diagram showing runway 33 and taxiway 40. Runway 33 is 5,431 x 100 feet. Taxiway 40 is 4 NM long. The diagram includes a holding pattern and a 331° turn to RW33.

4000

↑

PUVGE

✱

tr 028°

HOMAN

△

TOWAN

4 NM Holding Pattern

151° →

← 331°

3500

GP 3.00°

TCH 40

RW33

VIJIX

2000

2000

331°

5 NM

11.3 NM

CATEGORY	A	B	C	D
LPV DA	602-1 250 (300-1)			
LNAV/VNAV DA	718-1¼ 366 (400-1¼)			
LNAV MDA	780-1 428 (500-1)	780-1¼ 428 (500-1¼)	780-1½ 428 (500-1½)	
CIRCLING	860-1 508 (600-1)	900-1½ 548 (600-1½)	1060-2¼ 708 (800-2¼)	

MIRL Rwy 15-33

REIL Rwys 15 and 33

331° to RW33