

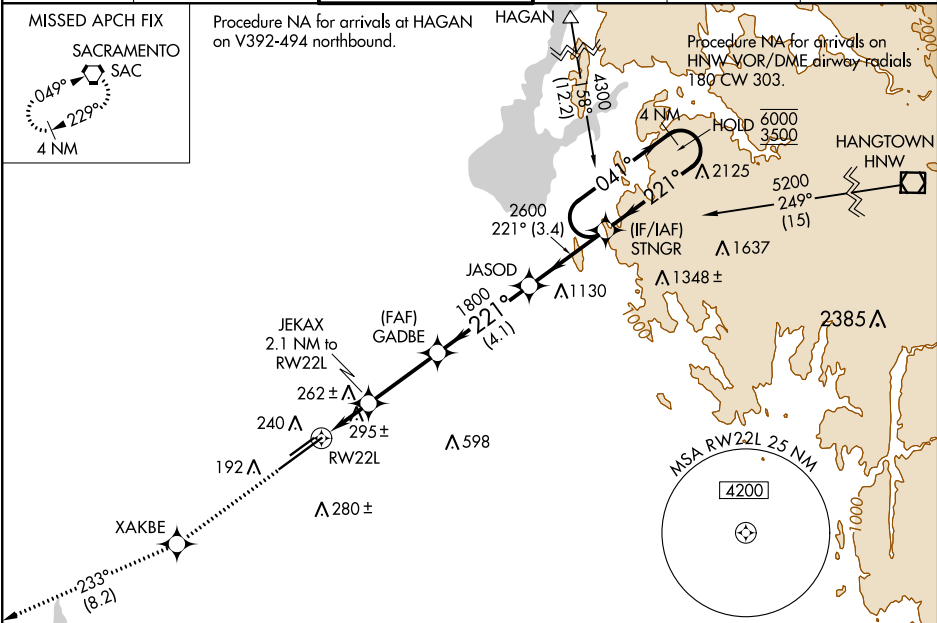
WAAS CH <b>40225</b> <b>W22A</b>	APP CRS <b>221°</b>	Rwy Idg <b>11301</b> TDZE <b>98</b> Apt Elev <b>98</b>
--	------------------------	--

# RNAV (GPS) RWY 22L

SACRAMENTO MATHER (MHR)

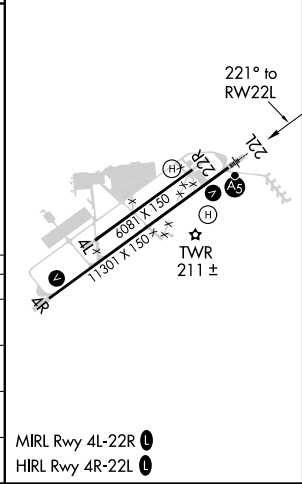
RNP APCH.	MALSR	MISSED APPROACH: Climb to 3000 direct XAKBE and on track 233° to SAC VORTAC and hold.
▼ Circling NA northwest of Rwy 4R-22L. For uncompensated Baro-VNAV systems, LNAV/VNAV NA below -15°C or above 54°C. For inop ALS, increase LNAV/VNAV all Cats visibility to 1½ SM and LNAV Cat C/D visibility to 1½ SM.		

ATIS <b>118.325</b>	NORCAL APP CON <b>127.4 317.5</b>	MATHER TOWER ★ <b>120.65 (CTAF) 0 282.25</b>	GND CON <b>121.85 307.9</b>	CLNC DEL <b>121.85 307.9</b>	UNICOM <b>122.95</b>
------------------------	--------------------------------------	---	--------------------------------	---------------------------------	-------------------------



ELEV <b>98</b>	TDZE <b>98</b>
----------------	----------------

3000	XAKBE	tr 233°	SAC	VGSI and RNAV glidepath not coincident (VGSI Angle 3.00/TCH 50).
*LNAV only	JAKAX 2.1 NM to RWY22L	GADBE 1800	JASOD	STNGR 4 NM Holding Pattern
*1.4 NM to RWY22L	*1.4 NM to RWY22L	1800	2600	221°
1.4 NM	0.7	3.1 NM	4.1 NM	3.4 NM
CATEGORY	A	B	C	D
LPV DA	298-½	200 (200-½)		
LNAV/VNAV DA	517-¾	419 (500-¾)		
LNAV MDA	580-½	482 (500-½)	580-1	482 (500-1)
CIRCLING	580-1	482 (500-1)	600-1½ 502 (600-1½)	800-2¼ 702 (800-2¼)



SW-2, 03 DEC 2020 to 31 DEC 2020

SW-2, 03 DEC 2020 to 31 DEC 2020