

LOC I-SAC <u>110.3</u>	APP CRS 019°	Rwy Idg 5503 TDZE 21 Apt Elev 24
----------------------------------	------------------------	---

ILS or LOC RWY 2
SACRAMENTO EXECUTIVE (SAC)

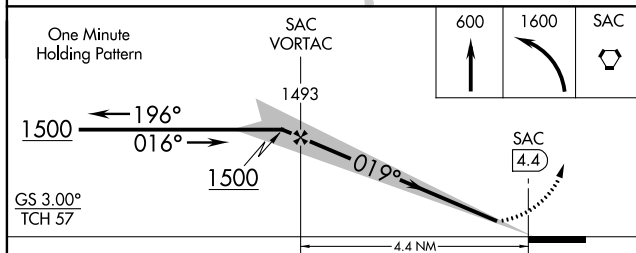
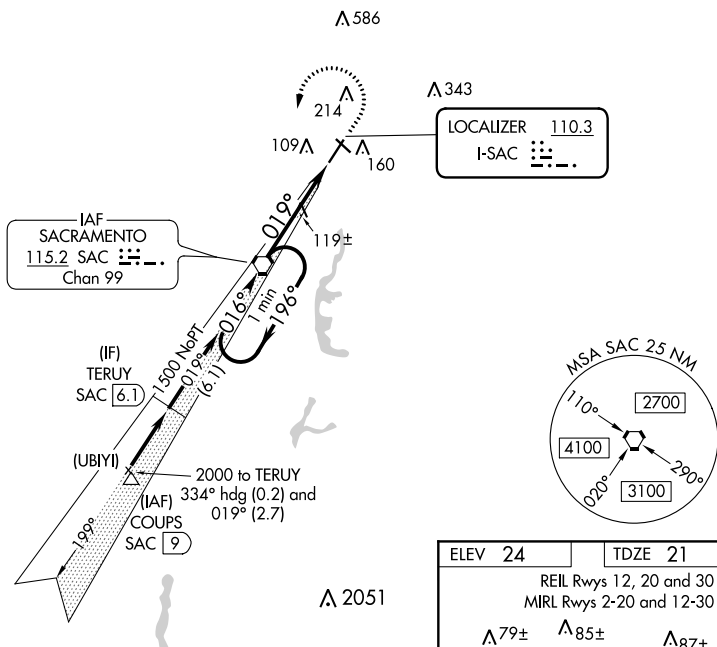
T When local altimeter setting not received, use Sacramento Intl altimeter setting and increase DA to 322, increase all MDA 40 feet. Autopilot coupled approach NA below 335 feet. For inop MALSR, increase S-ILS 2 all Cats visibility to 7/8 SM and S-LOC 2 Cat C/D visibility to 1 SM. For inop MALSR when using Sacramento Intl altimeter setting, increase S-ILS 2 all Cats visibility to 7/8 SM.

MALSR



MISSED APPROACH:
Climb to 600 then climbing
left turn to 1600 direct
SAC VORTAC and hold.

ATIS 125.5	NORCAL APP CON 125.25 257.9	EXEC TOWER ★ 119.5 (CTAF) 0 278.8	GND CON 125.0	UNICOM 122.95
----------------------	---------------------------------------	---	-------------------------	-------------------------



CATEGORY	A	B	C	D
S-ILS 2	294-½ 273 (300-½)			
S-LOC 2	380-½ 359 (400-½)		380-⅝ 359 (400-⅝)	
CIRCLING	500-1 476 (500-1)	520-1 496 (500-1)	520-1½ 496 (500-1½)	580-2 556 (600-2)

