

WAAS CH 62810 W02A	APP CRS 019°	Rwy Idg 5503 TDZE 21 Apt Elev 24
--	------------------------	---

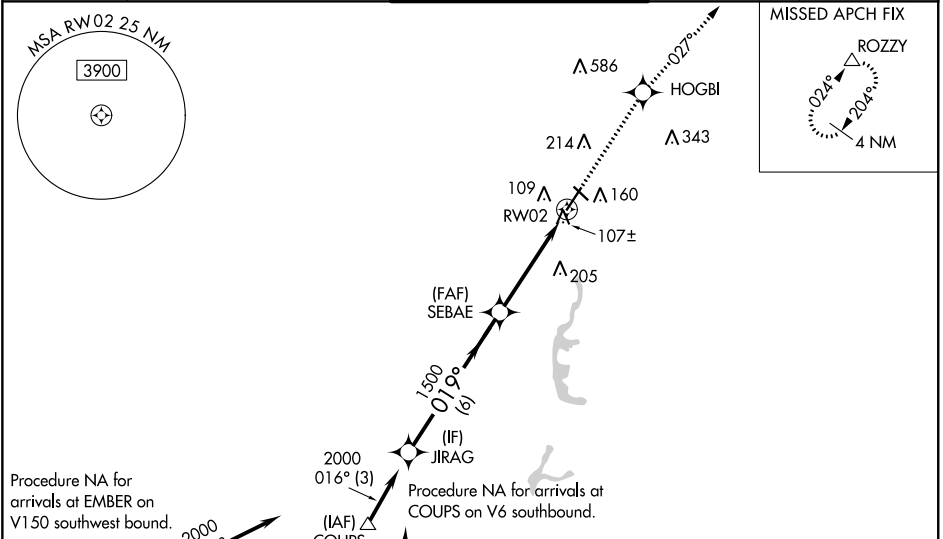
RNAV (GPS) RWY 2
SACRAMENTO EXECUTIVE (SAC)

⚠ Baro-VNAV NA when using Sacramento Intl altimeter setting. For uncompensated Baro-VNAV systems, LNAV/VNAV NA below -15°C (5°F) or above 54°C (130°F). DME/DME RNP-0.3 NA. When local altimeter setting not received, use Sacramento Intl altimeter setting and increase LPV DA to 322; increase LNAV/VNAV DA to 401 and all visibilities 1/8 mile; increase all MDA 40 feet and LNAV Cats C/D visibility 1/8 mile. For inop MALSR, increase LPV all Cats visibility to 1/2. For inop MALSR when using Sacramento Intl altimeter setting, increase LPV all Cats visibility to 1.

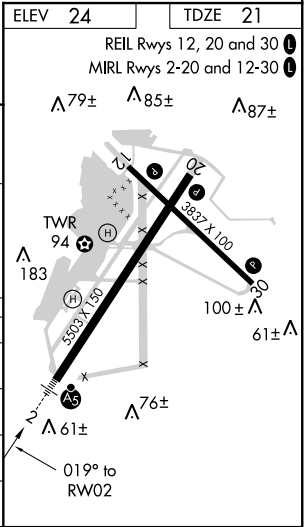
MALSR

MISSED APPROACH:
Climb to 3000 direct HOGBI and on track 027° to ROZZY and hold.

ATIS 125.5	NORCAL APP CON 125.25 257.9	EXEC TOWER ★ 119.5 (CTAF) 0 278.8	GND CON 125.0	UNICOM 122.95
----------------------	---------------------------------------	---	-------------------------	-------------------------



<p>(IAF) EMBER 050° (10.7)</p> <p>Procedure NA for arrivals at VISTO on V334-392 southbound. 348° (9.9) (IAF) VISTO</p>		<p>A 2030</p>		
<p>JIRAG</p> <p>2000</p> <p>GP 3.00° TCH 57</p>		<p>SEBAE</p> <p>1500</p> <p>1500</p>		
<p>019°</p> <p>6 NM</p>		<p>4.4 NM</p> <p>RW02</p>		
CATEGORY	A	B	C	D
LPV DA	294-1½		273 (300-½)	
LNAV/ VNAV	DA		373-5⁄8 352 (400-5⁄8)	
LNAV MDA	440-1½ 419 (500-½)		440-3⁄4 419 (500-¾)	
CIRCLING	500-1 476 (500-1)	520-1 496 (500-1)	520-1½ 496 (500-1½)	580-2 556 (600-2)



SW-2, 03 DEC 2020 to 31 DEC 2020

SW-2, 03 DEC 2020 to 31 DEC 2020