

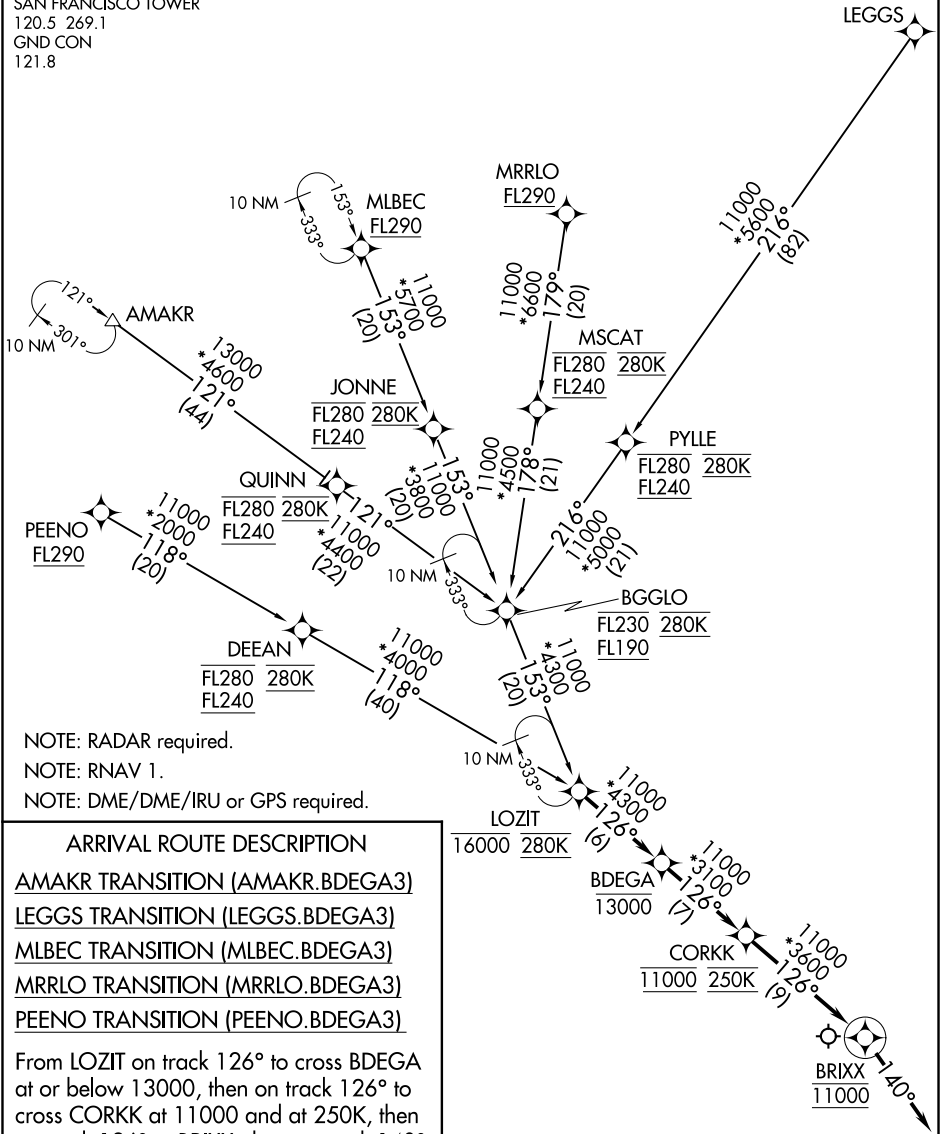
BDEGA THREE ARRIVAL (RNAV)

AL-375 (FAA)

SAN FRANCISCO INTL (SF'O)
SAN FRANCISCO, CALIFORNIA

OAKLAND CENTER
125.85 323.0
NORCAL APP CON
133.95 317.6
D-ATIS
113.7 115.8 118.85
SAN FRANCISCO TOWER
120.5 269.1
GND CON
121.8

CBRNA



NOTE: RADAR required.
NOTE: RNAV 1.
NOTE: DME/DME/IRU or GPS required.

ARRIVAL ROUTE DESCRIPTION

- AMAKR TRANSITION (AMAKR.BDEGA3)
- LEGGS TRANSITION (LEGGS.BDEGA3)
- MLBEC TRANSITION (MLBEC.BDEGA3)
- MRRLO TRANSITION (MRRLO.BDEGA3)
- PEENO TRANSITION (PEENO.BDEGA3)

From LOZIT on track 126° to cross BDEGA at or below 13000, then on track 126° to cross CORKK at 11000 and at 250K, then on track 126° to BRIXX, then on track 140°. Expect RADAR vectors to final approach course.

NOTE: Chart not to scale.

BDEGA THREE ARRIVAL (RNAV)

SAN FRANCISCO, CALIFORNIA
SAN FRANCISCO INTL (SF'O)

SW-2, 03 DEC 2020 to 31 DEC 2020

SW-2, 03 DEC 2020 to 31 DEC 2020