

LOC/DME I-SFO 109.55 Chan 32 (Y)	APP CRS 284°	Rwy Idg TDZE 13 Apt Elev 13	ILS RWY 28L (SA CAT II) SAN FRANCISCO INTL (SFO)	
---	------------------------	---	--	--

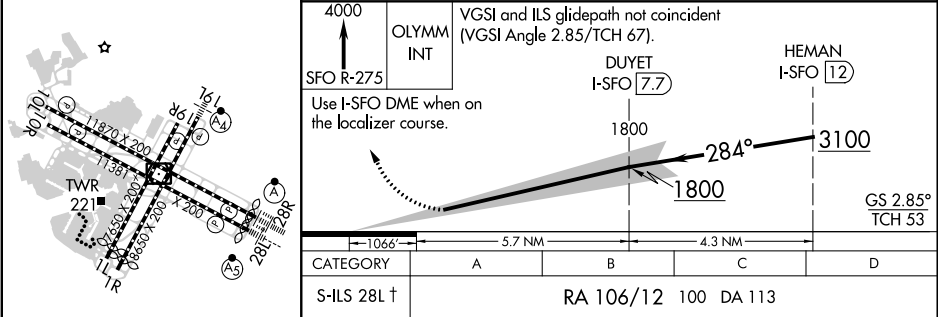
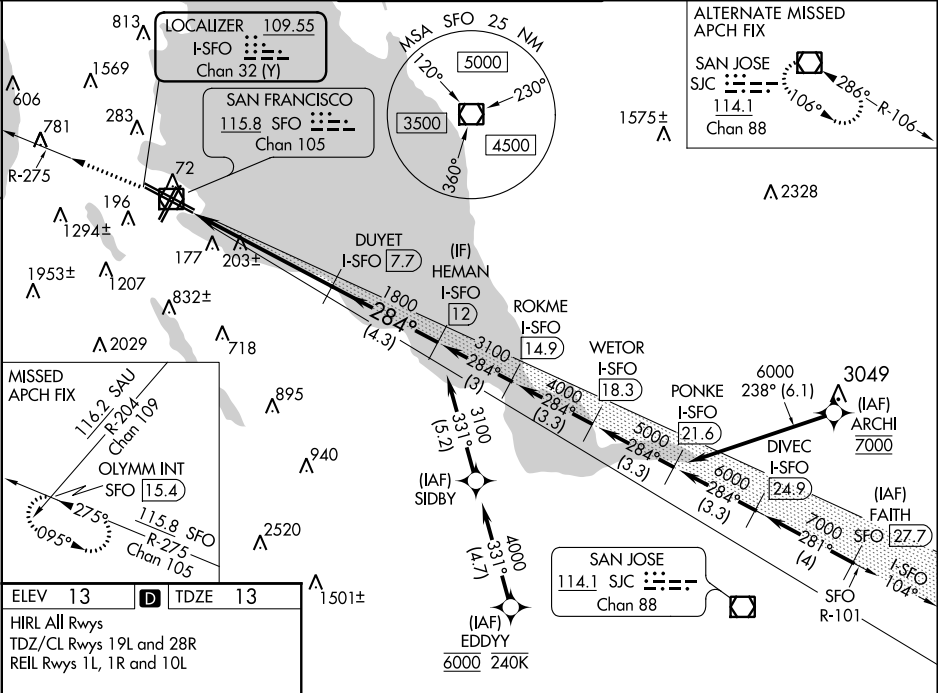
RNAV 1- GPS or RADAR required for procedure entry. DME required.

Reduced lighting: requires specific OPSPEC, MSPEC, or LOA approval and use of autoland or HUD to touchdown.

MALSR

MISSED APPROACH: Climb to 4000 on SFO VOR/DME R-275 to OLYMM INT/ SFO 15.4 DME and hold, continue climb-in-hold to 4000.
† Missed approach requires minimum climb of 330 feet per NM to 1600.

D-ATIS 113.7 115.8 118.85	NORCAL APP CON 134.5 338.2	SAN FRANCISCO TOWER 120.5 269.1	GND CON 121.8	CLNC DEL 118.2	CPDLC
-------------------------------------	--------------------------------------	---	-------------------------	--------------------------	-------



SA CAT II ILS - SPECIAL AIRCREW AND AIRCRAFT CERTIFICATION REQUIRED