

LOC/DME I-GWQ <b>111.7</b> Chan <b>54</b>	APP CRS <b>284°</b>	Rwy Idg <b>11236</b> TDZE <b>13</b> Apt Elev <b>13</b>	28R <b>10275</b> 28L <b>13</b>
---	------------------------	--	-----------------------------------

ILS or LOC RWY 28R

SAN FRANCISCO INTL (SFO)

RNAV 1-GPS or RADAR required for procedure entry.

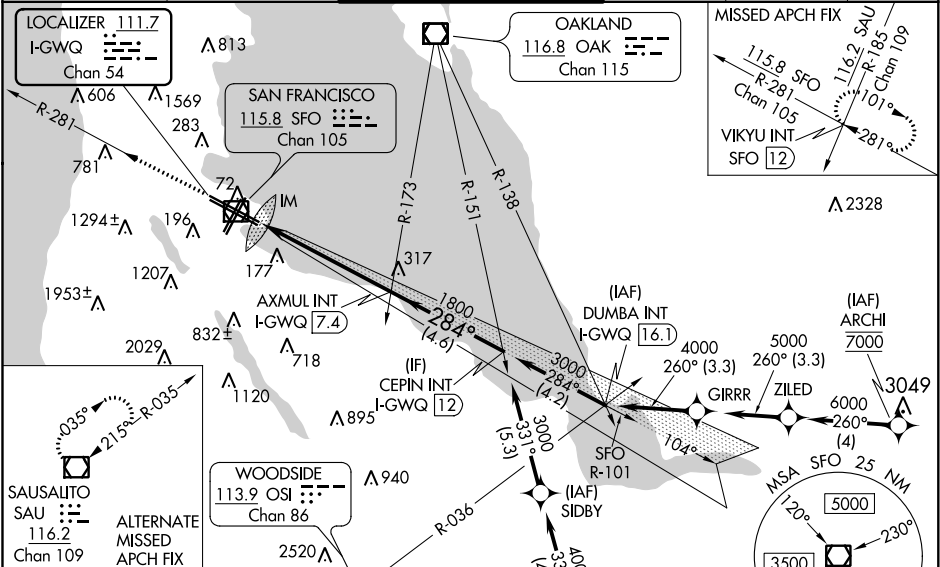
Circling NA to Rwy 10L, 10R, 19L, and 19R. Circling Rwy 1L, 1R NA at night. For inop ALS increase S-LOC 28R# Cat C/D visibility to 1½ SM. LOC procedure NA during simultaneous operations. Simultaneous approach authorized. Simultaneous operations require use of vertical guidance; maintain last assigned altitude until established on glideslope.

ALSIF-2  
Rwy 28R

MALSR  
Rwy 28L

MISSED APPROACH: Climb to 3000 on SFO VOR/DME R-281 to VIKYU INT/SFO 12 DME and hold.  
# Missed approach requires minimum climb of 350 feet per NM to 1900; if unable to meet climb gradient, see ILS or LOC RWY 28L.

D-ATIS <b>113.7 115.8</b> <b>118.85</b>	NORCAL APP CON <b>134.5 338.2</b>	SAN FRANCISCO TOWER <b>120.5 269.1</b>	GND CON <b>121.8</b>	CLNC DEL <b>118.2</b>	CPDLC
---	--------------------------------------	---	-------------------------	--------------------------	-------



ELEV **13**

TDZE 28R **13**

TDZE 28L **13**

HIRL all Rwys

TDZ/CL Rwys 19L and 28R

REIL Rwys 1L, 1R and 10L

FAF to MAP 5.4 NM

Knots	60	90	120	150	180
Min:Sec	5:24	3:36	2:42	2:10	1:48

CATEGORY				A				B				C				D			
S-ILS 28R#				213/18				200 (200-½)											
S-LOC 28R#				480/24				467 (500-½)				480/50				467 (500-1)			
SIDESTEP # 28L				480/55				467 (500-1)				480-1½				467 (500-½)			
CIRCLING				740-1				960-1¼				1560-3				NA			
				727 (800-1)				947 (1000-1¼)				1547 (1600-3)							