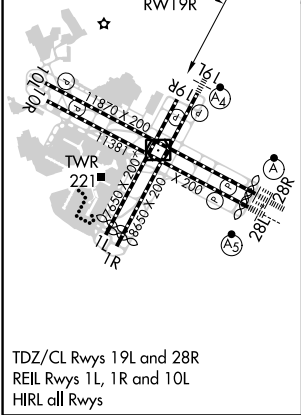
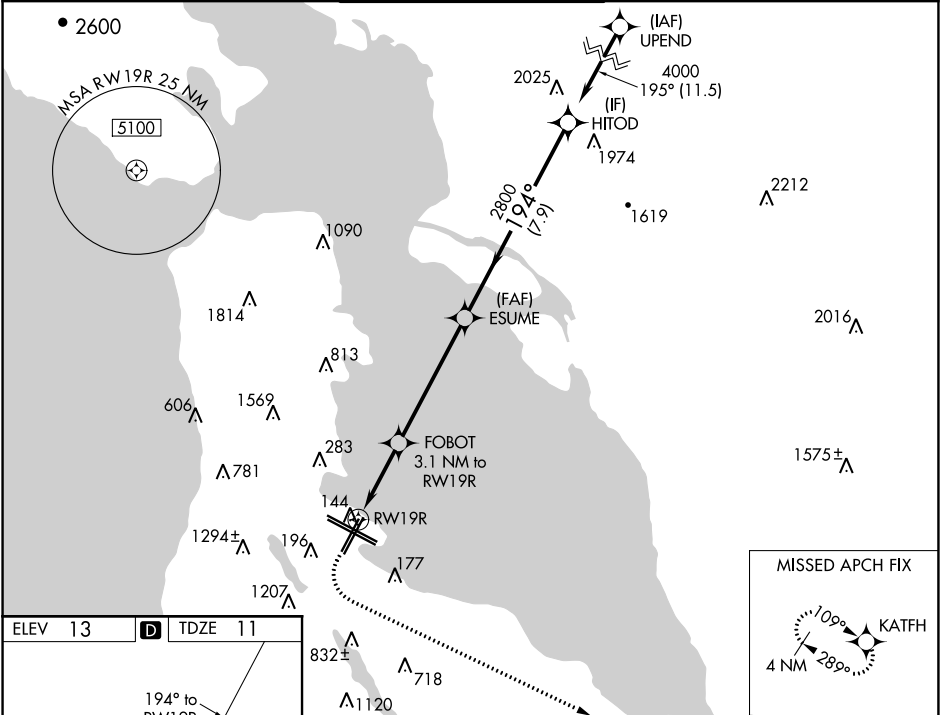


WAAS CH 53533 W19B	APP CRS 194°	Rwy Idg TDZE 11 Apt Elev 13
--	------------------------	---

RNAV (GPS) RWY 19R

SAN FRANCISCO INTL (SFO)

RNP APCH.		MISSED APPROACH: Climb to 600 then climbing left turn to 3000 direct KATFH and hold.		
LNAV procedure NA during simultaneous operations. For uncompensated Baro-VNAV systems, LNAV/VNAV NA below 3°C or above 42°C. Simultaneous approach authorized. Simultaneous operations require use of vertical guidance; maintain last assigned altitude until established on glidepath. Simultaneous approach NA below 28°C (52°F).				
D-ATIS 113.7 115.8 118.85	NORCAL APP CON 134.5 338.2	SAN FRANCISCO TOWER 120.5 269.1	GND CON 121.8	CLNC DEL 118.2
		CPDLC		



600	3000	KATFH				
*LNAV only.			FOBOT 3.1 NM to RW19R			
			HITOD			
			ESUME 2800		4000	
			194°		GP 3.15° TCH 55	
			2800			
1.9 NM			1.2 NM		5.1 NM	
					7.9 NM	
CATEGORY	A		B		D	
LPV DA			382/55 371 (400-1)			
LNAV/ VNAV DA			449-1¼ 438 (500-1¼)			
LNAV MDA	660/55 649 (700-1)		660-1⅞ 649 (700-1⅞)			