

SSTIK FOUR DEPARTURE (RNAV)

AL-375 (FAA)

SAN FRANCISCO INTL (SFO)
SAN FRANCISCO, CALIFORNIA

D-ATIS
113.7 115.8 118.85
CLNC DEL
118.2
CPDLC
GND CON
121.8
SAN FRANCISCO TOWER
120.5 269.1
NORCAL DEP CON
135.1 307.2

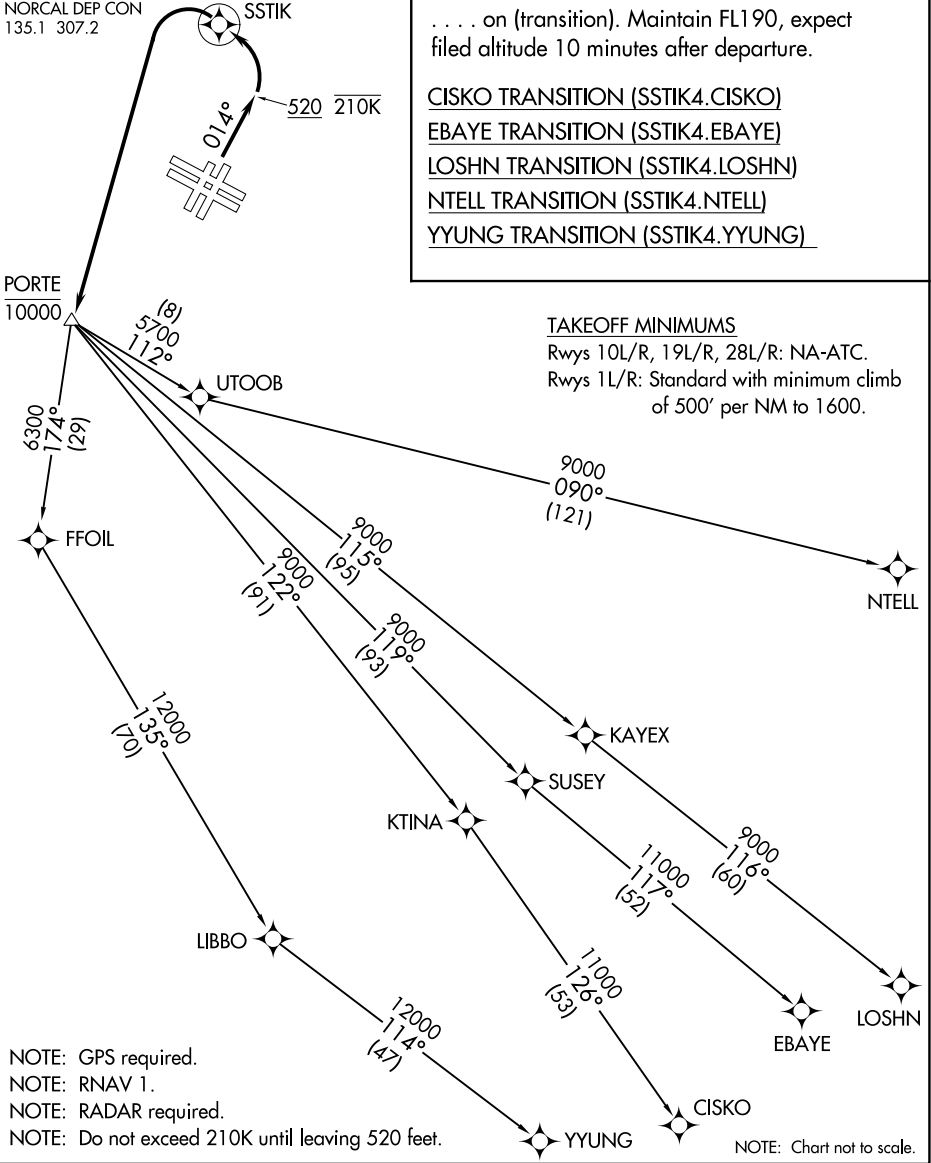
**TOP ALTITUDE:
FL190**

DEPARTURE ROUTE DESCRIPTION

TAKEOFF RUNWAYS 1L/R: Climb heading 014° to 520 and at or below 210K, then climbing left turn direct SSTIK, then climbing left turn direct PORTE at or below 10000. Thence. . . . on (transition). Maintain FL190, expect filed altitude 10 minutes after departure.

CISCO TRANSITION (SSTIK4.CISCO)
EBAYE TRANSITION (SSTIK4.EBAYE)
LOSHN TRANSITION (SSTIK4.LOSHN)
NTELL TRANSITION (SSTIK4.NTELL)
YYUNG TRANSITION (SSTIK4.YYUNG)

SW-2, 03 DEC 2020 to 31 DEC 2020



SW-2, 03 DEC 2020 to 31 DEC 2020

SSTIK FOUR DEPARTURE (RNAV)