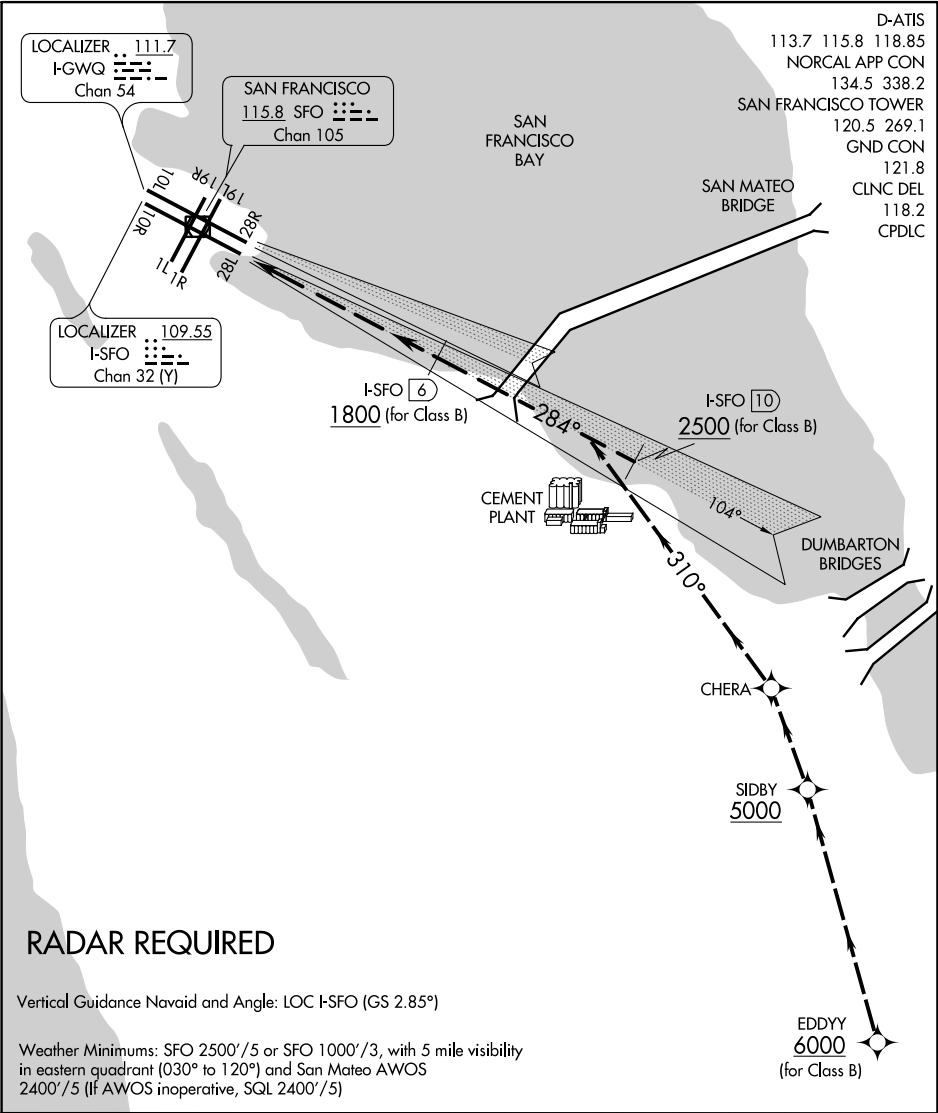


TIPP TOE VISUAL RWY 28L/R

AL-375 (FAA) SAN FRANCISCO INTL (SFO)
SAN FRANCISCO, CALIFORNIA



TIPP TOE VISUAL APPROACH RUNWAY 28L/R

NOTE: Closely spaced parallel visual approaches may be in progress. In the event of a go-around on Runway 28L, turn left heading 265° or on Runway 28R, heading 280°, climb and maintain 3000 or as directed by ATC.

TIPP TOE VISUAL RWY 28L/R