

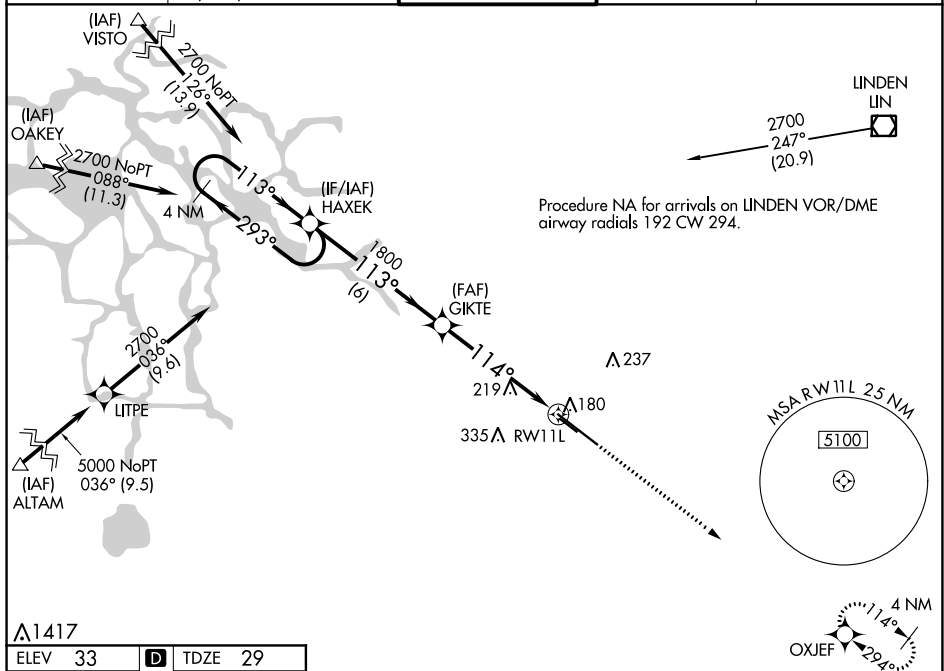
WAAS CH <b>72910</b> <b>W11A</b>	APP CRS <b>114°</b>	Rwy Idg <b>8650</b> TDZE <b>29</b> Apt Elev <b>33</b>
--	------------------------	---

RNAV (GPS) RWY 11L  
STOCKTON METROPOLITAN (SCK)

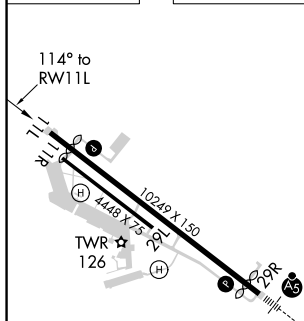
For uncompensated Baro-VNAV systems, LNAV/VNAV NA below -4°C (25°F) or above 54°C (130°F). DME/DME RNP-0.3 NA.

**MISSED APPROACH:** Climb to 2000 direct OXJEF and hold.

ATIS <b>118.25</b>	NORCAL APP CON (SE-NW) <b>123.85 278.3</b> (N-SE) <b>125.1 363.2</b>	STOCKTON TOWER ★ <b>120.3 (CTAF) 0 239.0</b>	GND CON <b>121.9</b>	UNICOM <b>122.95</b>
-----------------------	--	---	-------------------------	-------------------------



ELEV 33	<b>D</b>	TDZE 29
---------	----------	---------

HIRL Rwy 11L-29R **L**

Amdt 1A 01FEB18

37°54'N-121°14'W

STOCKTON METROPOLITAN (SCK)  
RNAV (GPS) RWY 11L

SW-2, 03 DEC 2020 to 31 DEC 2020

SW-2, 03 DEC 2020 to 31 DEC 2020