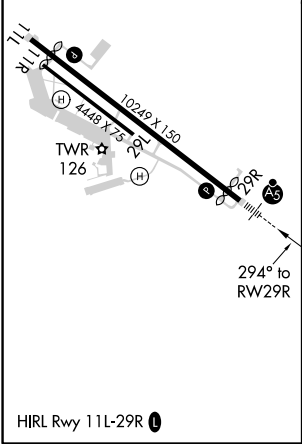
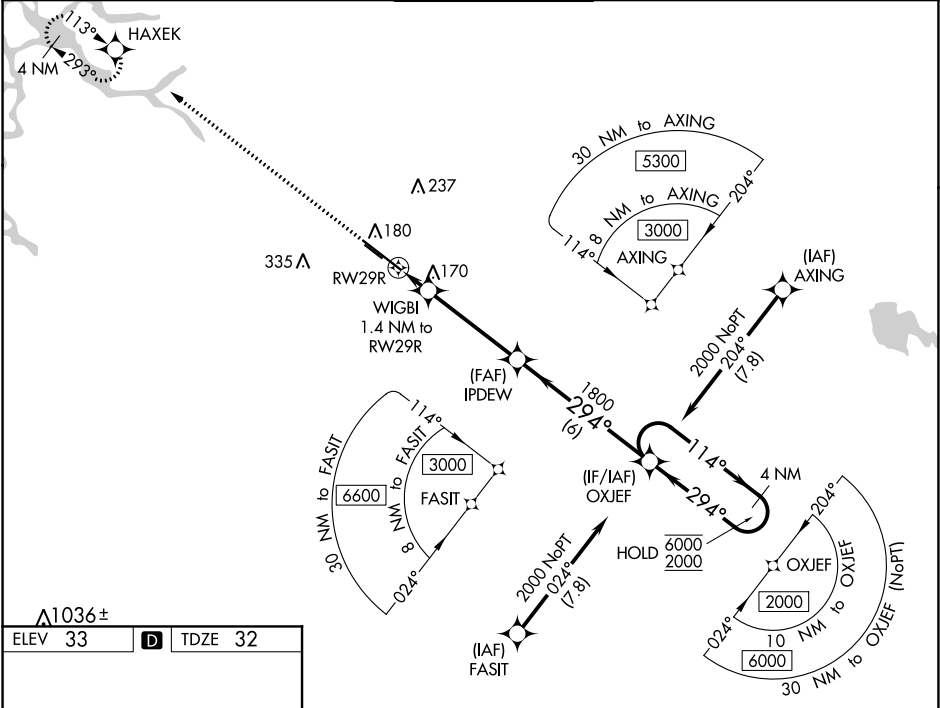


WAAS CH 87010 W29A	APP CRS 294°	Rwy Idg 8650 TDZE 32 Apt Elev 33
--	------------------------	---

RNAV (GPS) RWY 29R
STOCKTON METROPOLITAN (SCK)

RNP APCH. ▼ For uncompensated Baro-VNAV systems, LNAV/VNAV NA below -3°C or above 54°C. For inop ALS, increase LNAV/VNAV visibility all Cats to RVR 4500. #RVR 1800 authorized with use of FD or AP or HUD to DA.		MALSR 	MISSED APPROACH: Climb to 2700 direct HAXEK and hold.	
ATIS 118.25	NORCAL APP CON (SE-NW) 123.85 278.3 (N-SE) 125.1 363.2	STOCKTON TOWER ★ 120.3 (CTAF) 0 239.0	GND CON 121.9	UNICOM 122.95



2700	HAXEK	VGSI and RNAV glidepath not coincident (VGSI Angle 3.00/TCH 71).			
